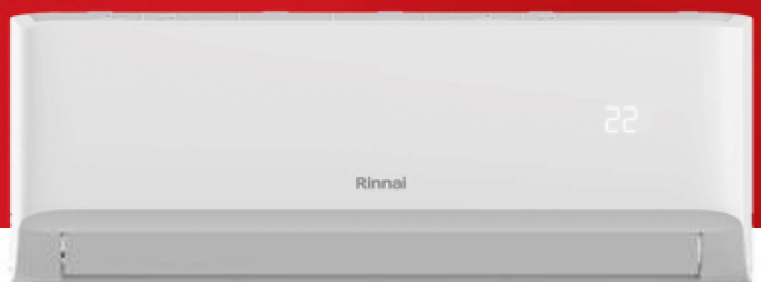


# Rinnai



## TX Series

Inverter Split System



# Rinnai TX Series

Designed for Australia's ever-changing climate, the Rinnai TX Series delivers reliable heating and cooling all year round.

With built-in Wi-Fi and voice control, you can easily manage your comfort through the NetHome Plus app or compatible devices. The new HEPA filtration system helps create a healthier home environment by removing dust particles and reducing bacteria in the air you breathe.

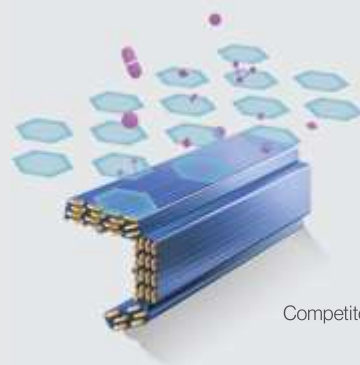
## At Rinnai, we're all About Comfort

For over 50 years, Rinnai has supplied Australian homes with a range of appliances that help people lead comfortable, safe, and efficient lifestyles.

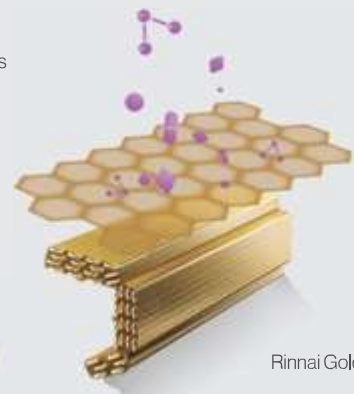
Being driven to create comfort means that we really care about your experience with our products. We design products with reliable technology and quality construction, ensuring dependable performance in everyday use.

## GoldGuard

The Rinnai TX Series condenser coil is protected by our GoldGuard coating, providing increased resistance to oxidation and corrosion compared to standard condenser coils. Using nanotechnology, the coating helps reduce bacteria growth and improves reverse cycle heating efficiency by accelerating the defrosting process. This supports long-term durability and reliable outdoor unit performance, even in coastal and other harsh environments. The coating is non-toxic and environmentally friendly.



Competitors



Rinnai GoldGuard





## We're at your Service

1stCare, Rinnai's national service network, provides expert service and service maintenance for Rinnai Group units, including Rinnai, Brivis, APAC, Polo, and select iZone and Kaden products. Our fully qualified technicians use only genuine spare parts for fast, reliable service.

Service, repair, and warranty assessment works are conducted 8:30am – 5:00pm AEST, Monday to Friday (excluding public holidays).

Call us on 1300 555 545  
or book a service online at  
[rinnai.com.au/support-resources/  
online-service-booking](http://rinnai.com.au/support-resources/online-service-booking)

## Optimising Performance

Follow the service maintenance schedule applicable to your product and carry out any routine user maintenance as outlined in the Operation Manual and/or Warranty Booklet provided. These simple steps help keep your units efficient and reliable, so you can enjoy the full Rinnai experience year after year.

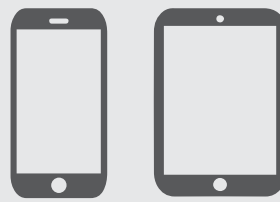
# Comfort at the Touch of a Button

## Wi-Fi Control

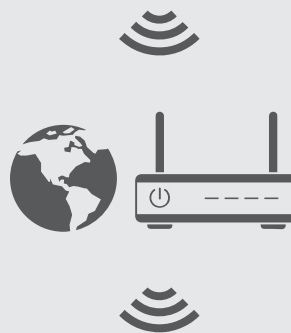
The Rinnai TX Series features Wi-Fi control via the **NetHome Plus app**.

Simple to activate and easy to use, the **NetHome Plus app** can be downloaded via Google Play or the Apple App Store on a compatible mobile device. Once installed and registered, you can operate your appliance on the go.

Using the **NetHome Plus app**, you can manage key functions including on/off, temperature and fan speed. With Wi-Fi control, you can also switch on your inverter split system from outside the home for added convenience.



Turn your inverter split system on or off, set the required temperature, fan speed and more, remotely with an internet connection.



Your home's internet router relays requests from the NetHome Plus app to control your inverter split system just like the normal remote controller.



Set your favourite temperature before you come home - enjoy the comfort and energy savings.



Available to download via:



# Features and Benefits



## **New Ultimate Control**

Take comfort to the next level with inbuilt Wi-Fi and voice control to manage your favourite settings via the NetHome Plus app, and compatible Google Assistant or Amazon Alexa devices.\*



## **New Healthier Indoor Air**

Equipped with a Cold Catalyst Filter and a HEPA Filter, it reduces up to 99%<sup>^</sup> of bacteria and dust particles, helping deliver cleaner, healthier indoor air for everyday comfort.



## **Superior Corrosion Protection**

The Rinnai TX Series condenser coil is coated with our GoldGuard coating making it more resistant to oxidation and corrosion than ordinary condenser coils.



## **Inverter Technology**

Delivers fast heating and cooling, with smart operation that maintains consistent temperatures and helps reduce running costs.



## **Quiet Operation**

Designed to keep noise levels to a minimum without affecting performance, thanks to its clever design that's optimised to deliver better air distribution.



## **3D Airflow**

Air blades can be controlled to swing both horizontally and vertically, allowing for balanced room temperature and comfort.



## **Dehumidifying Mode**

Efficiently manages room humidity levels to ensure optimum comfort levels during humid summer days.



## **Timer**

A delay ON or OFF timer allows you to select a period of time (from 30 minutes to 24 hours), the unit will turn either on or off depending on its current status.



## **Sleep Mode**

The TX Series intelligent sleep mode operates on a two-way temperature control that modulates up and down to mimic outside ambient temperatures, ensuring a comfortable sleep.



## **Demand Control**

Equipped with Demand Response Enabling Device (DRED) to help reduce overall power consumption at critical peak load times.\*\*



## **R32 Refrigerant**

R32 refrigerant has lower Global Warming Potential (GWP) than traditional refrigerants. Additionally, it provides higher energy efficiency while using lower refrigerant volumes.



## **Turbo Function**

Quickly cool in summer or swiftly warm in winter.

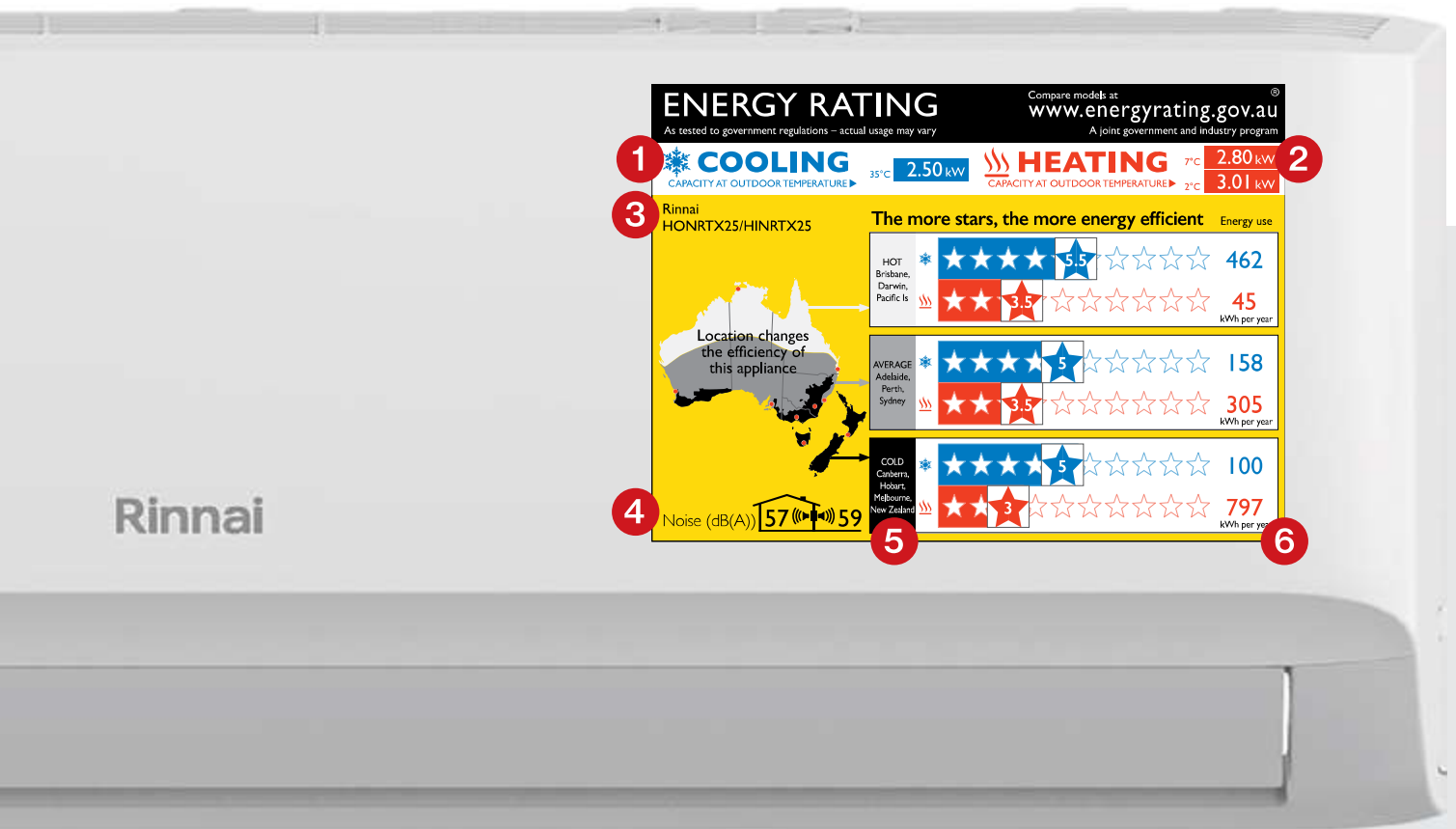
\*For full details visit [www.rinnai.com.au](http://www.rinnai.com.au)

<sup>^</sup>Tested by Intertek, Report No. 250626075GZU-007 and 250626075GZU-001, an independent third-party laboratory.

\*\*Subject to availability from your energy provider.

\*Rinnai uses a third-party application (App) to enhance your experience of the Rinnai product. You may use the App at your sole discretion. Please note that when you download and use the App and its services, the third-party's privacy policy and terms and conditions of service will apply. By using the Rinnai product through this App, you acknowledge and agree that: The third-party App may collect, store, and process your personal information according to its own privacy policy and App terms and conditions. Rinnai does not control and are not responsible for the content, policies, or practices of the third-party App and its services. Rinnai strongly recommends that you review the App privacy policy before using its features. The use of the third-party App is optional. For further information or clarification, please contact us at 1300 555 545 and [privacy@rinnai.com.au](mailto:privacy@rinnai.com.au)

# Zoned Energy Rating Label



## 1 Cooling Capacity

The amount of cooling the inverter split system can provide when the outside temperature is above 35°C.

## 2 Heating Capacity

The amount of heating the inverter split system can provide when the outside temperature is 7°C and below 2°C.

## 3 Model Name and Number

## 4 Noise Levels - Sound Power

How loud the inverter split system will be when it is running. The number inside the house shows the inside noise levels, the number outside of the house illustrates the noise levels near the outdoor unit.

## 5 Efficiency Ratings Based on Locations

The efficiency of a product will change, dependent on the location in which it operates. There are three bands of ratings - hot, average and cold areas in Australia and New Zealand. Use the map to determine which band to use.

## 6 Electricity Usage

How much electricity the inverter split system will use each year for heating and cooling.

### How to read the label

The performance of inverter split systems is affected by the climate it is operating in. For this reason, new non-ducted household inverter split system must display a new Zoned Energy Rating Label that considers the climate you live in. The label provides an energy rating for three climate zones (hot, average and cold), helping you select an appliance that performs best in your location. Estimated annual energy use in kilowatt hours (kWh) is provided on the right of the label, for heating (red) and cooling (blue) in each climate zone. In addition, it has output capacity for heating at two outdoor temperatures and cooling at one outdoor temperature, as well as noise indicators at the bottom to show the volume in decibels (dB(A)) of the inverter split system.

# Technical Information

RINNAI - TX Series Hi-Wall Split System		HSNRTX25	HSNRTX35	HSNRTX50	HSNRTX60	HSNRTX70	HSNRTX80	HSNRTX90	
Nominal Capacity	kW	2.5	3.5	5.0	6.0	7.0	7.6	9.0	
Power Supply to Outdoor Unit	V - Ph - Hz	220-240 - 1 - 50							
Recommended Circuit Breaker	A	16	16	20	20	25	25	25	
Connectivity		Wi-Fi Enabled							
Demand Response Enabling Device		DRED Enabled							
Rated Capacity	kW	2.5	3.5	5.0	6.0	7.0	7.6	9.0	
Capacity Range		0.90-3.45	1.05-3.90	2.30-6.20	2.30-6.20	2.91-8.23	3.03-8.23	3.22-9.38	
Rated Power Input	W	540	850	1338	1735	2010	2274	2568	
Rated Current	A	2.42	3.80	5.92	7.73	9.10	10.30	11.60	
AEER Annualised Energy Efficiency Ratio [AEER]	W/W	4.61	4.10	3.73	3.45	3.48	3.36	3.50	
TCSPF Temperature Compensated Seasonal Performance Factor [TCSPF] (Hot / Average / Cold)		7.06/6.58/6.89	6.53/6.19/6.51	6.00/5.68/6.01	5.51/5.31/5.62	5.61/5.34/5.65	5.23/5.03/5.33	5.76/5.50/5.90	
Star Rating (Hot / Average / Cold)	-	5.5/5.0/5.0	5.0/4.5/5.0	4.5/4.0/4.5	4.0/3.5/4.0	4.0/3.5/4.0	3.5/3.5/3.5	4.0/4.0/4.0	
Rated Capacity	kW	2.8	4.0	5.5	6.5	7.5	8.2	9.5	
Capacity Range		1.10-3.75	1.20-4.10	2.40-6.40	2.40-6.40	2.38-8.86	2.40-8.86	2.78-9.96	
Rated Power Input	W	571	930	1314	1702	1945	2285	2464	
Rated Current	A	2.56	4.10	5.79	7.43	8.70	10.20	11.20	
ACOP Annual Coefficient of Performance [ACOP]	W/W	4.87	4.29	4.21	3.81	3.85	3.58	3.84	
HSPF Heating Seasonal Performance Factor [HSPF] (Hot / Average / Cold)		5.44/5.01/4.59	5.38/4.69/4.20	4.86/4.37/3.81	4.89/4.09/3.45	4.88/4.26/3.76	4.91/4.14/3.60	5.24/4.33/3.60	
Star Rating (Hot / Average / Cold)	-	3.5/3.5/3.0	3.5/3.0/2.5	3.0/2.5/2.0	3.0/2.5/1.5	3.0/2.5/2.0	3.0/2.5/2.0	3.5/2.5/2.0	
Maximum Input Power (Cooling / Heating)	W	2300	2300	3400	3400	4050	4050	4100	
Maximum Input Current (Cooling / Heating)	A	10.5	10.0	15.5	15.5	17.5	17.5	18.0	
Suitable Area Coverage (up to 2.6m insulated ceiling)	m <sup>2</sup>	11-17	16-23	23-33	27-40	32-47	36-53	36-53	
Indoor Unit Model No.		HINRTX25	HINRTX35	HINRTX50	HINRTX60	HINRTX70	HINRTX80	HINRTX90	
Air Flow (Turbo / Hi / Med / Lo / Min)*	L/s	175/139/100/83/50	183/147/106/86/56	264/222/167/139/125	264/222/167/139/125	337/293/190/140/137	337/293/190/140/137	375/308/211/156/97	
Moisture Removal	L/h	1.3	1.7	2.5	2.5	3.4	3.4	3.2	
Sound Power Level	dB(A)	57.0	59.0	60.5	59.6	65.1	64.8	65.2	
Sound Pressure Level @ 1m (Turbo / Hi / Med / Lo / Min)**	dB(A)	45.5/39.0/32.0/25.0/20.0	45.0/39.5/33.0/26.0/19.5	48.5/45.5/38.0/30.5/20.0	48.5/45.5/38.0/30.5/20.0	52.0/50.0/41.5/27.0/21.0	52.0/50.0/41.5/27.0/21.0	54.5/52.0/45.5/34.5/22.5	
Air Swing Louvres	Direction	Vertical and Horizontal							
Dimensions	Dimension (W x D x H)	mm	802x200x295	802x200x295	971x228x321	971x228x321	1082x234x337	1082x234x337	1259x283x362
	Packing (W x D x H)	mm	875x288x375	875x288x375	1045x308x405	1045x308x405	1155x318x415	1155x318x415	1340x383x450
	Net / Gross Weight	kg	8.6/11.1	8.6/11.1	11.0/14.6	11.0/14.6	13.2/17.1	13.2/17.1	19.0/24.7
Operating Range	Cooling	°C	16 - 32						
	Heating	°C	0 - 30						
Outdoor Unit Model No.		HONRTX25	HONRTX35	HONRTX50	HONRTX60	HONRTX70	HONRTX80	HONRTX90	
Sound Power Level	dB(A)	59	62.9	67.4	67.1	69.6	69.1	68.3	
Sound Pressure Level @ 1m	dB(A)	54	56	58	58	61	61	59.5	
Dimensions	Dimension (W x D x H)	mm	765x303x555	765x303x555	890x342x673	890x342x673	890x342x673	890x342x673	946x410x810
	Packing (W x D x H)	mm	887x337x610	887x337x610	1030x438x750	1030x438x750	1030x438x750	1030x438x750	1090x500x965
	Net / Gross Weight	kg	24.7/27.0	25.8/28.0	38.6/42.1	38.6/42.1	43.8/47.2	43.8/47.2	60.3/64.6
Type		R32							
Charged Volume	kg	0.62	0.85	1.26	1.26	1.40	1.40	2.20	
Pipe Size: Liquid / Gas	mm	6.35/9.52	6.35/9.52	6.35/12.70	6.35/12.70	6.35/15.90	6.35/15.90	9.52/15.90	
Refrigerant	Maximum Pipe Length	m	25	25	30	30	50	50	50
	Chargeless Length	m	15	15	15	15	15	15	15
	Extra Charge for Lengths >15m	g/m	12	12	12	12	12	12	24
	Maximum Vertical Separation	m	10	10	20	20	25	25	25
Ambient Temperature Limits	Cooling	°C	-15 - 50						
	Heating	°C	-15 - 24						

\*Values tested in fan mode

\*\*The declared sound pressure level represents the maximum value measured in either cooling or heating mode. It is provided as a general specification and is not specific to one mode of operation.

Capacities tested in accordance with AS/NZS 3823.2, with 5m interconnecting pipe length. With our policy of continuous improvement, we reserve the right to change, or discontinue at any time, specifications or designs without notice.

Note: All images contained within this brochure are for illustrative purposes only, the colours and finishes of the products featured are as close to the respective product range as photographic lighting and printing processes allow.

**Rinnai Australia Pty Ltd**

ABN 74 005 138 769

82-88 Mills Rd,  
Braeside, VIC, 3195

For further information  
call 1300 555 545 or visit  
[rinnai.com.au](http://rinnai.com.au)

**TOTAL HOME COMFORT**



HOT WATER



HEATING



COOLING

**Rinnai**