

CLEVELAND SGL-30-TR & SGL-40-TR

GAS TILTING BRATT PANS

Tilting skillet, Durapan gas open base. 120 or 150 litre capacity. 3 amp. Motorised tilt control.

Model: **SGL-30-TR (120lt capacity)**
SGL-40-TR (150lt capacity)



STANDARD FEATURES

- Anti-Splash Pouring Lip
- Power Tilt (Hydraulic Hand Tilt Optional)
- All Controls are serviceable from the front of the unit
- Stainless Steel Clad 16mm Cooking Surface Guaranteed against warping
- Stainless Steel Coved Cornered Pans with both Gallon and Litre Markings
- All Stainless Steel Construction for durability and easy cleaning
- Adjustable, Electronic Thermostat controls temperature from 37°C to 218°C
- High Efficiency Heating System with even heat distribution
- Fast Heat-Up and Recovery Time-Preheats in 11 minutes, full capacity from cold to boiling in 60 minutes
- Spring Assist Cover with Adjustable Vent and Full Width Handle
- On/Off Switch, Thermostat Knob and Pilots, recessed to avoid breakage
- Four Stainless Steel, Level adjustable feet, rear flanged for bolting
- Two pilot lights; Green = Power on, Amber = Temperature Cycling
- Splash Proof Controls and Water Tight Electrical Connections
- Leg or Modular Base
- Electronic Spark Ignition
- High Limit Safety Device set at 246°C

OPTIONAL FEATURES

- Gas types other than natural
- Food Strainers for pouring spout (FS)
- Poaching Pans (PP)
- Power Tilt with Hand Tilt Override (PT1)
- Hydraulic Hand Tilt with quick lowering feature (HTS)
- Sliding Drain Drawer with Splash Screen (SLD) (for SGL models only)
- Double or Single Pantry Faucet (SPS14, DPS14), includes Faucet Mounting Bracket
- Tangent draw-off valve 51mm (TD2SK)
- In-Wall Carrier (IWCS)
- Vegetable Steamers (VS)
- Wall Mounting (WMS)

SPECIFICATIONS ARE SUBJECT TO CHANGE WITHOUT NOTICE.

From the world of Comcater!

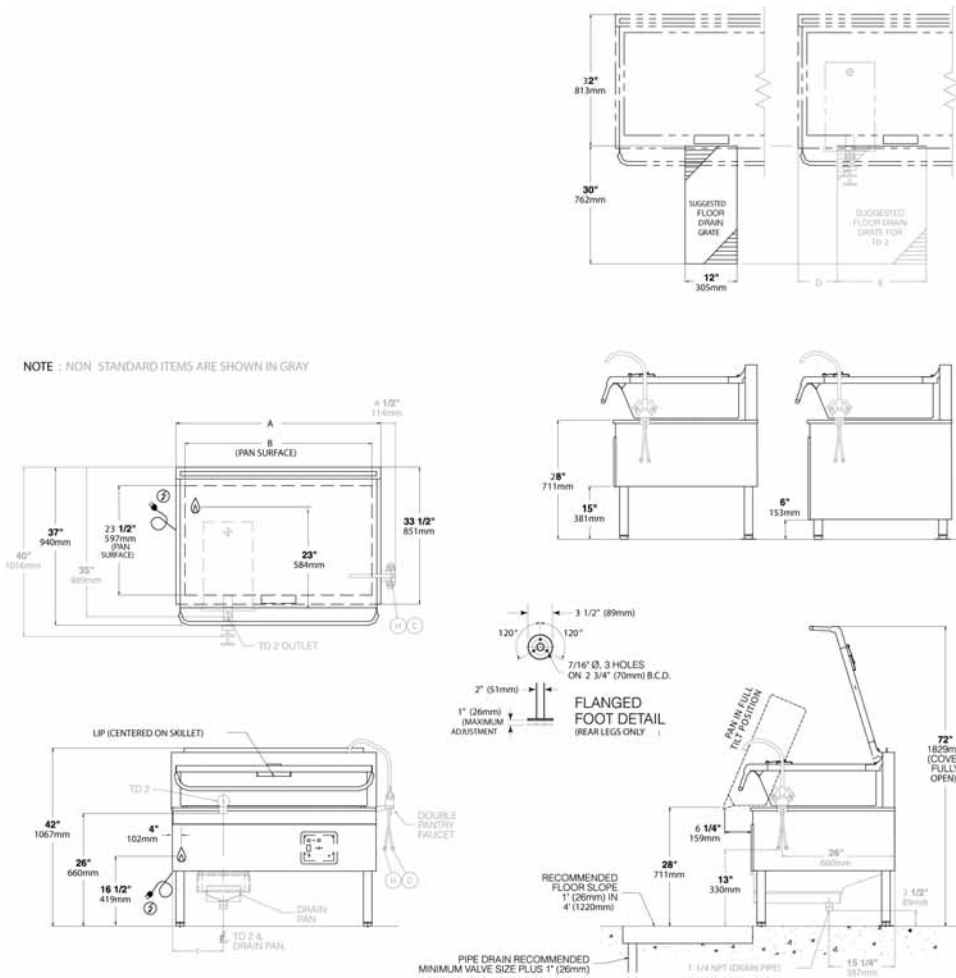
National Head Office
 156 Swann Drive
 Derrimut VIC 3030
 Tel: +61 3 8369 4600
 Fax: +61 3 8369 4695

Melbourne
 96-100 Tope Street,
 South Melbourne VIC 3205
 Tel: +61 3 8369 4600
 Fax: +61 2 8699 1299

Sydney
 20/4 Avenue of the Americas
 Newington, NSW 2127
 Tel: +61 2 9748 3000
 Fax: +61 2 9 648 4762

Brisbane
 1/62 Borthwick Avenue
 Murarrie QLD 4172
 Tel: +61 7 3399 3122
 Fax: +61 7 3399 5311

CLEVELAND SGL-30-TR & SGL-40-TR



DIMENSIONS

External: 914W x 851D x 1067H mm (SGL-30-TR)

External: 1219W x 851D x 1067H mm (SGL-40-TR)

TECHNICAL DATA

Gas Type	Natural or LP
Gas Connection	3/4"
Electrical Connection	240V, Single Phase, 10A
Energy Rating	96mj (SGL-30-TR) 138mj (SGL-40-TR)
Clearance	153mm Rear 115mm Right Side (Faucet)

SPECIFICATIONS ARE SUBJECT TO CHANGE WITHOUT NOTICE.



www.comcater.com.au

PROUDLY DISTRIBUTED BY: