

# The Products





# The Benchmark

Scotsman has focused single-mindedly on ice making technologies since the first day: over 60 years of enthusiasm and experience to be and remain the first and the best.

**Innovative by tradition.**



Chicago



Shanghai



Milano

# Worldwide footprint



Scotsman produces its extensive and high quality ranges of products in 3 factories located in the USA, ITALY and CHINA.

This includes a large presence in 85 countries from the Pacific Rim in the East to Canada in the West, with strategic offices and hubs in Europe, America and Asia.

**Over 1,000,000 Scotsman ice machines installed.**

# Ice and its shapes



## Gourmet Ice

Crystal clear, pure, hard and long lasting ice cubes. Individually formed by spraying water onto a subcooled horizontal evaporator. Its fast cooling action and slow dilution make drinks chilled for a long time. Available in three different sizes and weights to meet any requirement in terms of ease of use and quality results.



## Dice Ice

Classic six sides ice cube. Its greater surface for heat exchange allows a fast chilling of all drinks. The vertical evaporator technology of this ice cube guarantees large ice production at lower operating costs. Available in several different sizes, it is highly appreciated in QSR and coffee chains applications.



## Nugget and Cubelet Ice

Compressed flake ice available in two different types: Nugget, regular micro-cubes and Cubelet, irregular chips. Nugget & Cubelet are suitable for multiple uses and are the fastest moving ice-type in QSR applications in the last few years.

Excellent when used with carbonated drinks as well as smoothies and perfect for food and plates display.

Long lasting, easy to use, high and fast displacement and hands-free dispensing: no wonder this type of ice is so successful!



## Flake Ice

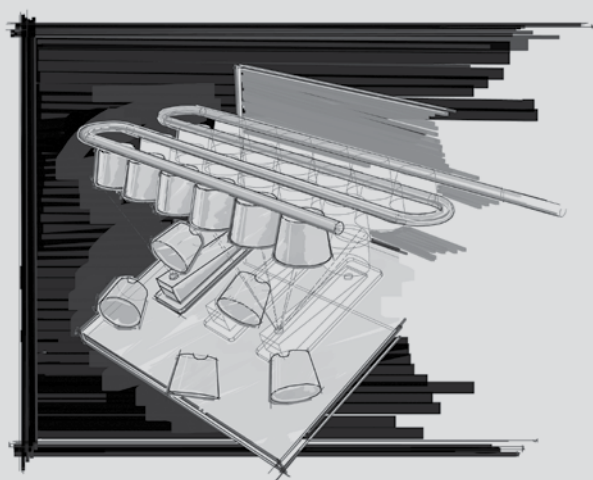
Ice in its most natural shape, it is made at a temperature just below zero degrees Celsius. Highly versatile and suitable for multiple applications: fish display counters, buffet display, frozen drinks preparation as well as fast chilling of wine & champagne buckets. It comes in two different variations: Flake with 25% residual water content and Super Flake with 15% residual water content.



## Scale Ice

With less than 2% residual water content, it's very dry and it's the coldest form of ice. It's made by irregular fragments of ice with a variable thickness that can be adjusted between 1 to 2 mm. Ideal for industrial processes, for fish and sea-food display and perishable goods transportation, as well as to optimize dough temperature. Versatile, molding to any shape, melts at a slow and regular rate to keep food at maximum freshness.

# A top-class must: Gourmet ice makers



Ice horizontal evaporator and spray-system technology.



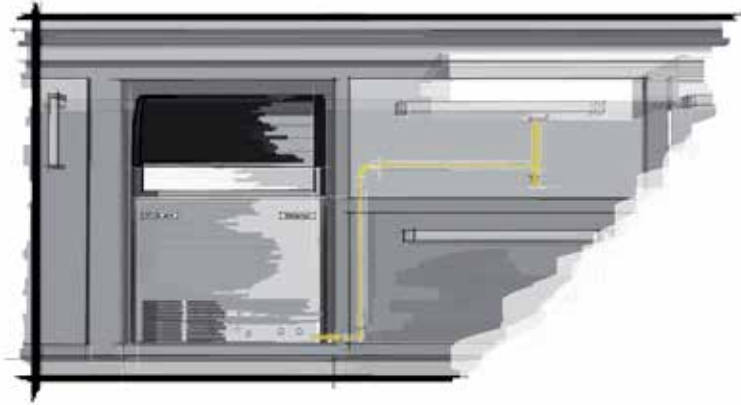
**Small Gourmet**  
8 g / Ø 21 mm / H 25 mm



**Medium Gourmet**  
20 g / Ø 30 mm / H 34 mm



# EC series: featuring Progressive Water Discharge



## EC 46

**Cube size:**  
Medium cube

**Condensing system:**  
Air cooled

**Max daily production:**  
23kg Medium cubes



**Storage bin capacity:**  
9kg

**Dimensions:**  
W 386mm  
D 600mm  
H 645mm

## EC 56

**Cube size:**  
Small cube

**Condensing system:**  
Air cooled

**Max daily production:**  
24kg Small cubes



**Storage bin capacity:**  
12kg

**Dimensions:**  
W 386mm  
D 600mm  
H 695mm

## EC 86

**Cube size:**  
Small cube

**Condensing system:**  
Air cooled

**Max daily production:**  
37kg Small cubes



**Storage bin capacity:**  
19kg

**Dimensions:**  
W 531mm  
D 600mm  
H 785mm / 825mm with legs

## EC 87 Propane

**Cube size:**  
Medium cube

**Condensing system:**  
Air cooled

**Max daily production:**  
38kg Medium cubes



**Storage bin capacity:**  
19kg

**Dimensions:**  
W 531mm  
D 600mm  
H 795mm / 835mm with legs

## Small and medium production

- **Agion:** the technology that makes products cleaner and longer lasting with built-in protection working 24/7 to resist the growth of microbes and the development of unpleasant odors.
- **Clean alert:** advises with a blink when it's time to clean the filter.
- **Electronic control:** ambient and water temperatures may change throughout the years but your ice machine will stay the same.
- **Front access condenser air filter:** a do-it-yourself cleaning operation that saves time and money and makes your ice maker live longer.
- **Individual transparent solid cube:** each single cube is an artwork: crystal clear and perfectly shaped, faithful to the Scotsman tradition.
- **Scale accumulation preventing system:** traps ice makers' enemy No. 1 in one place and makes it harmless.
- **Ergonomic access to ice with sliding disappearing door:** one-touch door lift, makes barman's life significantly easier.
- **PWD - Progressive Water Discharge:** pumps excess residual water up to a distance of 15 meters.
- **Built-in storage bin:** allows most undercounter installations for easier fit-in solutions.

## EC 106

### Cube size:

Medium cube

### Condensing system:

Air cooled

### Max daily production:

48kg Medium cubes



### Storage bin capacity:

23kg

### Dimensions:

W 531mm

D 600mm

H 840mm / 930mm with legs

## EC 126

### Cube size:

Medium cube

### Condensing system:

Air cooled

### Max daily production:

66kg Medium cubes



### Storage bin capacity:

34kg

### Dimensions:

W 680mm

D 600mm

H 920mm / 1009mm with legs

## EC 176

### Cube size:

Small cube

### Condensing system:

Air cooled

### Max daily production:

69kg Medium cubes



### Storage bin capacity:

41kg

### Dimensions:

W 680mm

D 600mm

H 990mm / 1079mm with legs

## EC 177 Propane

### Cube size:

Medium cube



### Condensing system:

Air cooled

### Max daily production:

98kg Medium cubes



### Storage bin capacity:

48kg

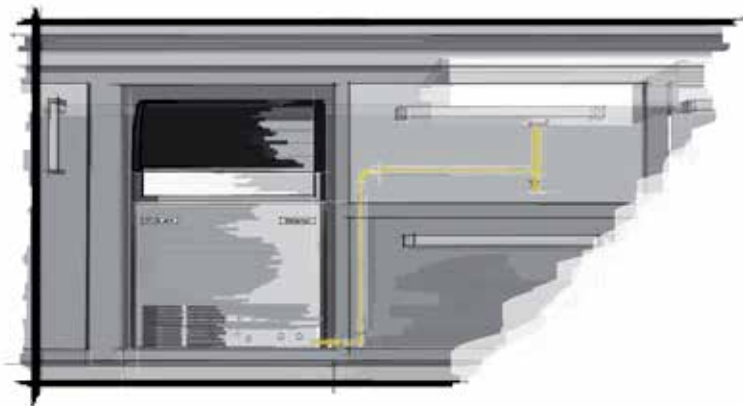
### Dimensions:

W 680mm

D 600mm

H 990mm / 1079mm with legs

# EC series: featuring Progressive Water Discharge



## EC 206

**Cube size:**

Small cube

**Condensing system:**

Air cooled

**Max daily production:**

93kg Small cubes



**Storage bin capacity:**

50kg

**Dimensions:**

W 1250mm

D 622mm

H 779mm / 809mm with legs

## EC 226

**Cube size:**

Small cube

**Condensing system:**

Air cooled

**Max daily production:**

140kg Small cubes



**Storage bin capacity:**

70kg

**Dimensions:**

W 1078mm

D 719mm

H 1004mm / 1082mm with legs

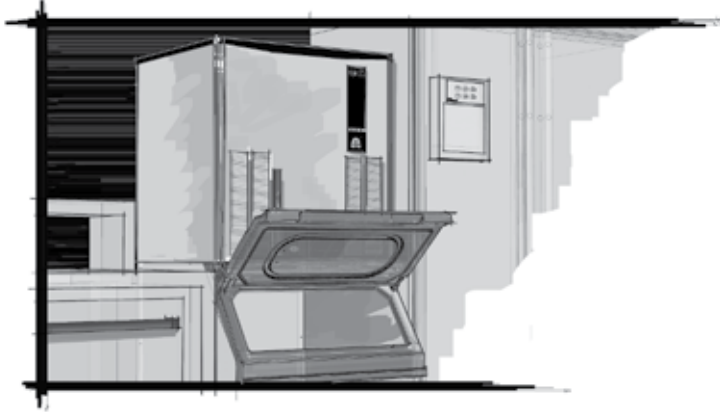
---

## Small and medium production

A commercial ice machine stands in a room with a large, ornate white door and a window. In the foreground, a wooden crate is filled with fresh seafood, including fish and lobsters, resting on a bed of crushed ice. A stack of wooden crates is visible on the left side of the room.

Delivering pure freshness.

# MXG series



## MXG 328

**Cube size:**  
Medium cube

**Condensing system:**  
Air cooled

**Max daily production:**  
144kg Medium cubes



### Dimensions (Head only):

W 568mm  
D 704mm  
H 721mm

**Recommended bins:**  
NB 193

## MXG 428

**Cube size:**  
Medium cube

**Condensing system:**  
Air cooled

**Max daily production:**  
180kg Medium cubes



### Dimensions (Head only):

W 568mm  
D 704mm  
H 721mm

**Recommended bins:**  
NB 193

## MXG 437 Propane

**Cube size:**  
Medium cube



**Condensing system:**  
Air cooled

**Max daily production:**  
155kg Medium cubes



### Dimensions (Head only):

W 773mm  
D 705mm  
H 723mm

**Recommended bins:**  
NB 393, NB 530

## MXG 438

**Cube size:**  
Medium cube

**Condensing system:**  
Air cooled

**Max daily production:**  
180kg Medium cubes



### Dimensions (Head only):

W 773mm  
D 705mm  
H 723mm

**Recommended bins:**  
NB 393, NB 530

## High Production



- **Agion:** the technology that makes products cleaner and longer lasting with built-in protection working 24/7 to resist the growth of microbes and the development of unpleasant odors.
- **Electronic control:** ambient and water temperatures may change throughout the years but your ice machine will stay the same.
- **External indicator lights:** keep ice maker's operations under constant surveillance.
- **Front access condenser air filter:** a do-it-yourself cleaning operation that saves time and money and makes your ice maker live longer.
- **Global standard footprint:** strictly follows international imperial standards commonly adopted in the industry of reference.
- **Clean alert:** advises with a blink when it's time to clean the filter.
- **Individual transparent solid cube:** each single cube is an artwork: crystal clear and perfectly shaped, faithful to the Scotsman tradition.
- **Head only ice maker:** requires a separate storage bin to store the ice produced.\*

## MXG 638

### Cube size:

Medium cube

### Condensing system:

Air cooled

### Max daily production:

310kg Medium cubes



### Dimensions (Head only):

W 773 mm

D 704 mm

H 1128 mm

### Recommended bins:

NB 393, NB 530, NB 948

## DXG 35

### Cube size:

Medium cube

### Condensing system:

Air cooled

### Max daily production:

27kg Medium cubes



### Storage bin capacity:

11 kg

### Dimensions:

W 380 mm

D 515 mm

H 1606 mm / 1696 with legs

## Dispenser

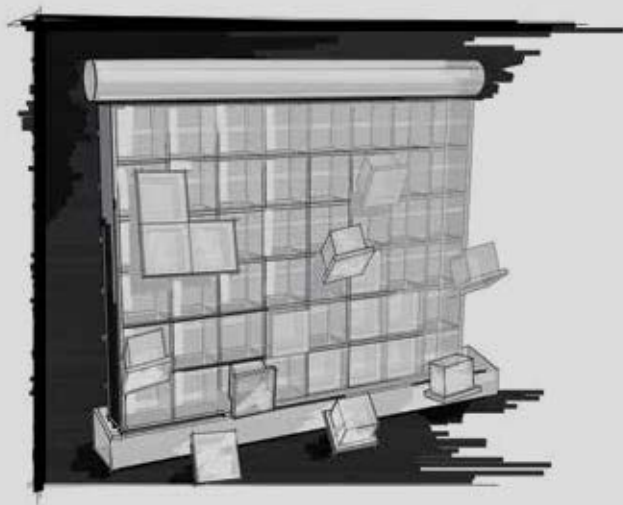
\* For all possible bin combinations available, please refer to chart at page 60.



**Made for harsh and  
extreme environments.**



# Business casual: Dice ice makers



Ice vertical evaporator.



**Half Dice Cube**

6 g

W 10mm / D 22mm / H 28mm



**Full Dice Cube**

10 g

W 22mm / D 22mm / H 22mm

---



# NU easy series: the no-frills solution



## NU 100

### Cube size:

Full dice

### Condensing system:

Air cooled

### Max daily production:

45kg



### Storage bin capacity:

20kg

### Dimensions:

W 600mm  
D 610mm  
H 744mm / 770mm with  
short legs

## NU 150

### Cube size:

Full dice

### Condensing system:

Air cooled

### Max daily production:

68kg



### Storage bin capacity:

20kg

### Dimensions:

W 600mm  
D 610mm  
H 744mm / 770mm with  
short legs

## NU 220

### Cube size:

Full dice

### Condensing system:

Air cooled

### Max daily production:

100kg



### Storage bin capacity:

37kg

### Dimensions:

W 651mm  
D 690mm  
H 841mm / 870mm with  
short legs

- **Front-in & front-out air flow:** no need to leave space on the back.
- **Front access condenser air filter:** a do-it-yourself cleaning operation that saves time and money and make your ice maker live longer.
- **Ergonomic access to ice with sliding disappearing door:** one touch door lift, makes barman's life significantly easier.
- **Easy cleaning:** through routine maintenance.
- **Built-in storage bin:** allows undercounter installations for easier fit-in solution, specifically for coffee shops.

## Small and medium production

# NW Series

## NW 308

**Cube size:**

Half dice  
Full dice

**Condensing system:**

Air cooled

**Max daily production:**

140kg Half dice  
140kg Full dice

**Dimensions (Head only):**

W 560mm  
D 610mm  
H 662mm

**Recommended bins:**

NB 193, NB 393, NB 530

## NW 508

**Cube size:**

Half dice  
Full dice

**Condensing system:**

Air cooled

**Max daily production:**

220kg Half dice  
220kg Full dice

**Dimensions (Head only):**

W 560mm  
D 610mm  
H 662mm

**Recommended bins:**

NB 193, NB 393, NB 530

## NW 458

**Cube size:**

Half dice  
Full dice

**Condensing system:**

Air cooled

**Max daily production:**

200kg Half dice  
200kg Full dice

**Dimensions (Head only):**

W 760mm  
D 620mm  
H 575mm

**Recommended bins:**

NB 393, NB 530

## High production



- **Global standard footprint:** strictly follows international imperial standards commonly adopted in the industry of reference.
- **One touch cleaning:** reduces labor costs and saves time and simplifies cleaning process.
- **Front evaporator access:** immediate access to the evaporating plate for quick self-maintenance operations.
- **Stackable:** add flexibility!
- **Condenser air filter.**
- **Head only ice maker:** requires a separate storage bin to collect the ice produced\*.

## NW 608

### Cube size:

Half dice  
Full dice

### Condensing system:

Air cooled

### Max daily production:

280kg Half dice  
280kg Full dice



### Dimensions (Head only):

W 760mm  
D 620mm  
H 575mm

### Recommended bins:

NB 393, NB 530, NB 948

## NW 1008

### Cube size:

Half dice  
Full dice

### Condensing system:

Air cooled

### Max daily production:

456kg Half dice  
456kg Full dice



### Dimensions (Head only):

W 760mm  
D 620mm  
H 800mm

### Recommended bins:

NB 393, NB 530, NB 948

## NW 1408

### Cube size:

Half dice  
Full dice

### Condensing system:

Air cooled

### Max daily production:

650kg Half dice  
630kg Full dice



### Dimensions (Head only):

W 760mm  
D 620mm  
H 1001mm

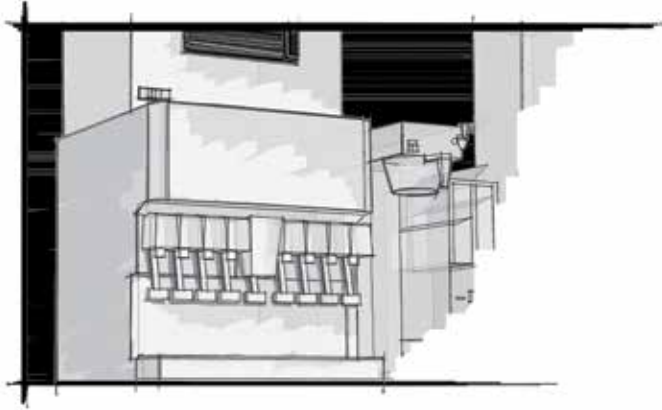
### Recommended bins:

NB 530, NB 948

EASY

\* For all possible bin combinations available, please refer to chart at page 60.

# C Prodigy series: the ultimate solution



## C 1448

**Cube size:**

Full dice cube

**Condensing system:**

Air cooled

**Max daily production:**

636kg



**Dimensions (Head only):**

W 1219mm

D 610mm

H 737mm

**Recommended bins:**

NB 948, UBH 1100

## C 1848

**Cube size:**

Full dice cube

**Condensing system:**

Air cooled

**Max daily production:**

736kg



**Dimensions (Head only):**

W 1219mm

D 610mm

H 737mm

**Recommended bins:**

NB 948, UBH 1100

## High Production



- 
- **Agion:** the technology that makes products cleaner and longer lasting with built-in protection working 24/7 to resist the growth of microbes and the development of unpleasant odors.
  - **One touch cleaning:** reduces labor costs and saves time.
  - **Electronic control:** ambient and water temperatures may change throughout the years but your ice machine will stay the same.
  - **Front access condenser air filter:** a do-it-yourself cleaning operation that saves time and money and makes your ice machine live longer.
  - **Water sense adaptive purge control:** uses just as much water as it is actually needed, limiting wastage to the minimum.
  - **Head only ice maker:** requires a separate storage bin to store the ice produced. Also suitable for installations on beverage fountains/dispensers.\*

## C 2148 (Remote)

**Cube size:**

Full dice cube

**Condensing system:**

Remote condensing system

**Max daily production:**

869kg Medium cubes



**Dimensions (Head only):**

W 1219mm

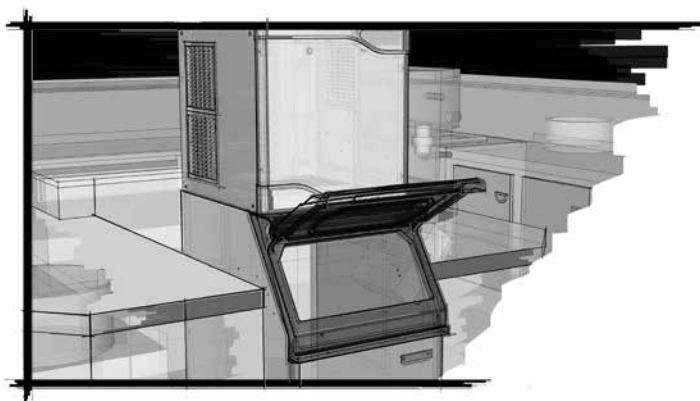
D 610mm

H 737mm

**Recommended bins:**

NB 948, UBH 1100

# MV series: the fit all solution



## MV 430 Propane

### Cube size:

Full dice



### Condensing system:

Air cooled

### Max daily production:

192kg

## MV 460 Propane

### Cube size:

Full dice



### Condensing system:

Air cooled

### Max daily production:

205kg



### Dimensions (Head only):

W 563mm

D 613mm

H 660mm

### Recommended bins:

NB 193, NB 393, NB 530



### Dimensions (Head only):

W 768mm

D 617mm

H 574mm

### Recommended bins:

NB 393, NB 530, NB 948

- **Agion:** the technology that makes products cleaner and longer lasting with built-in protection working 24/7 to resist the growth of microbes and the development of unpleasant odors.
- **Electronic control:** ambient and water temperatures may change throughout the years but your ice machine will stay the same.
- **Front evaporator:** immediate access to the evaporating plate for quick self-maintenance operations.
- **Head only ice maker:** requires a separate storage bin to store the ice produced.\*

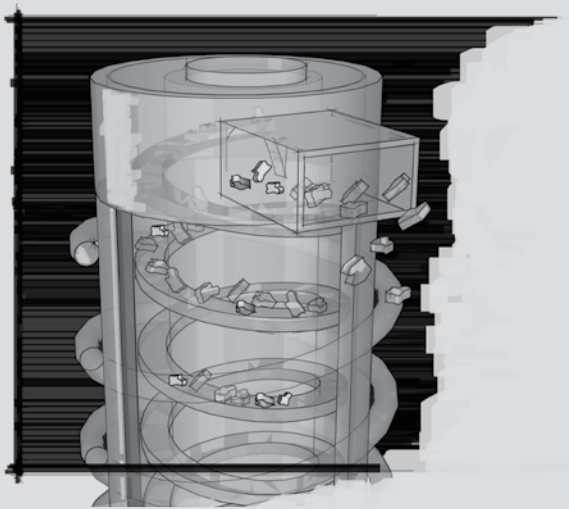
\* For all possible bin combinations available, please refer to chart at page 60.

**Over one million  
Scotsman ice makers  
installed in the world.**





# The pure and simple: Nugget and Cubelet ice makers



Ice evaporator with stainless steel auger.



## **Nugget**

1 g / Ø 11 mm / H 13 mm  
Residual water content 8%



## **Cubelet**

1 g / W 16 mm / D 15 x 7-8 mm  
Residual water content 8%

---



# The universal ice: Nugget



## MFN 46

### Cube size:

Nugget

### Condensing system:

Air cooled

### Max daily production:

265kg



### Dimensions (Head only):

W 538mm

D 663mm

H 645mm

### Recommended bins:

NB 193, NB 393, NB 530,  
NB948

## MFN 56

### Cube size:

Nugget

### Condensing system:

Air cooled

### Max daily production:

590kg



### Dimensions (Head only):

W 538mm

D 663mm

H 785mm

### Recommended bins:

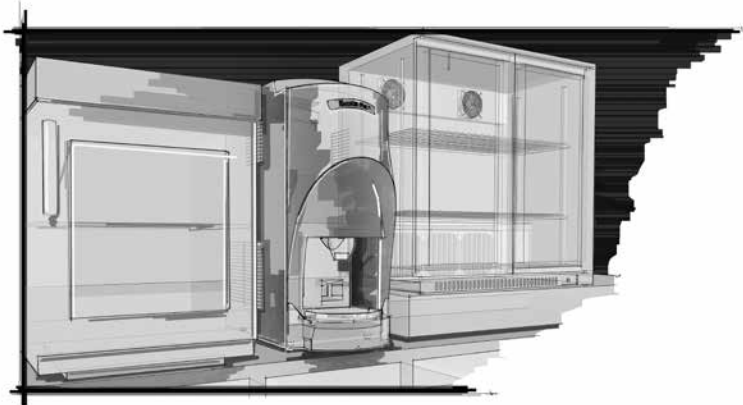
NB 193, NB 393, NB 530,  
NB 948

- **Agion:** the technology that makes products cleaner and longer lasting with built-in protection working 24/7 to resist the growth of microbes and the development of unpleasant odors.
- **Electronic control:** ambient and water temperatures may change throughout the years but your ice machine will stay the same.
- **External indicator lights:** keep ice machine's operations under constant surveillance.
- **Plug-and-work technology:** starts off and constantly produces ice thanks to a no-cycle harvesting system.
- **Water in / ice out concept** (no cycles, zero water wastage): limits to almost zero excess energy, water and time wastage.
- **Head only ice maker:** requires a separate storage bin to store the ice produced.\*

## High Production

\* For all possible bin combinations available, please refer to chart at page 60.

# The chewable ice®: Cubelet



## TC S-L 180 ASM

### Cube size:

Cubelet

### Condensing system:

Air cooled

### Options:

Long Range  
Short Range

### Max daily production:

119kg  
Manual version with 2 push buttons Ice & water configuration

## AFC 80

### Cube size:

Cubelet

### Condensing system:

Air cooled

### Max daily production:

79kg

## AFC 134

### Cube size:

Cubelet

### Condensing system:

Air cooled

### Max daily production:

127kg

### TC180

- **Agion:** the technology that makes products cleaner and longer lasting with built-in protection working 24/7 to resist the growth of microbes and the development of unpleasant odors.

- **Appealing and elegant design:** it can be smartly positioned in any situation, from luxury lounges to unconventional traditional pubs, allowing customers to cool their drinks to their own taste, without any hygiene hazards.

### AFC series

- **Agion:** the technology that makes products cleaner and longer lasting with built-in protection working 24/7 to resist the growth of microbes and the development of unpleasant odors.
- **Electronic control:** ambient and water temperatures may change throughout the years but your ice maker will stay the same.
- **Front access condenser air filter:** a do-it-yourself cleaning operation that saves time and money and makes your ice maker live longer (only AFC 134).
- **PWD - Progressive Water Discharge (optional):** pumps excess residual water up to a distance of 15 meters (only AFC 134).
- **Built-in storage bin:** allows undercounter installations for easier fit-in solution.



### Storage bin capacity:

Long Range: 9kg  
Short Range: 5kg

### Dimensions Long Range:

W 390mm D 660mm H 878mm

### Dimensions Short Range:

W 390mm D 600mm H 878mm



### Storage bin capacity:

25kg

### Dimensions:

W 535mm

D 620mm

H 797mm / 890 with legs



### Storage bin capacity:

40kg

### Dimensions:

W 950mm

D 605mm

H 789mm / 872 with legs

## Medium Production

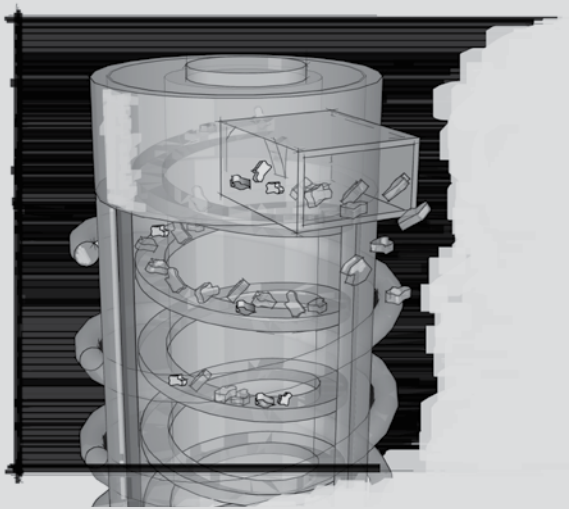
\* For all possible bin combinations available, please refer to chart at page 60.





**Escaping the heat.**

# The pure freshness: Flake ice makers

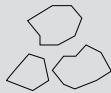


Ice evaporator and stainless steel auger.



## **Flake Ice**

Residual water content 25%



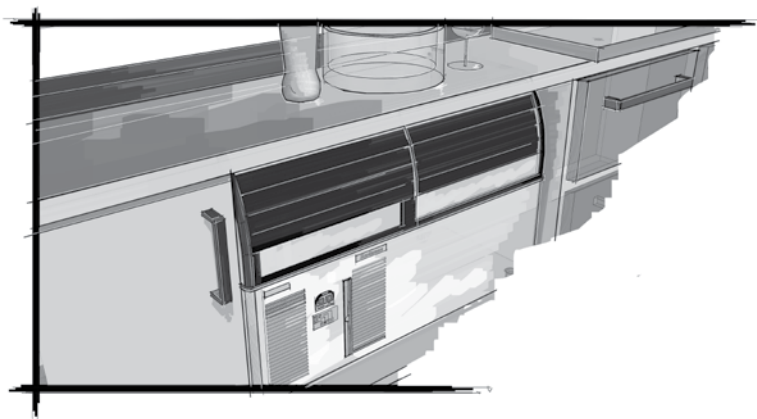
## **Superflake ice**

Residual water content 15%

---



# Flaker series



## AF 80

**Cube size:**

Flake

**Condensing system:**

Air cooled

**Max daily production:**

67kg

## AF 103 / EF 103

**Cube size:**

Flake

**Condensing system:**

Air cooled

**Max daily production:**

102kg

## AF 124 / EF 124

**Cube size:**

Flake

**Condensing system:**

Air cooled

**Max daily production:**

112kg

## AF 156 / EF 156

**Cube size:**

Flake

**Condensing system:**

Air cooled

**Max daily production:**

148kg



**Storage bin capacity:**

25kg

**Dimensions:**

W 535mm

D 620mm

H 797mm / 890mm with legs



**Storage bin capacity:**

30kg

**Dimensions:**

W 592mm

D 622mm

H 997mm / 1078mm with legs



**Storage bin capacity:**

40kg

**Dimensions:**

W 950mm

D 605mm

H 789mm / 872mm with legs



**Storage bin capacity:**

60kg

**Dimensions:**

W 950mm

D 605mm

H 1000mm / 1083mm with legs

## Small and medium production

- **Agion:** the technology that makes products cleaner and longer lasting with built-in protection working 24/7 to resist the growth of microbes and the development of unpleasant odors.
- **Clean alert:** advises with a blink when it's time to clean the filter.
- **Electronic control:** ambient and water temperatures may change throughout the years but your ice maker will stay the same.
- **Front access condenser air filter:** a do-it-yourself cleaning operation that saves time and money and makes your ice maker live longer.
- **PWD - Progressive Water Discharge (optional on EF series):** pumps excess residual water up to a distance of 15 meters.
- **Water in / ice out concept (no cycles, zero water wastage):** limits to almost zero excess energy, water and time wastage.
- **Ergonomic access to ice with sliding disappearing door:** one-touch door lift, makes barman's life significantly easier.
- **AF/EF series - built-in storage bin:** allows most undercounter installations for easier fit-in solutions.
- **MF series - head only ice maker:** requires a separate storage bin to store the ice

## MF 26

### Cube size:

Flake

### Condensing system:

Air cooled

### Max daily production:

114kg



### Dimensions (Head only):

W 563mm

D 536mm

H 531mm

### Recommended bins:

NB 193, NB 393, NB 530

## MF 36

### Cube size:

Flake

### Condensing system:

Air cooled

### Max daily production:

195kg



### Dimensions (Head only):

W 563mm

D 536mm

H 531mm

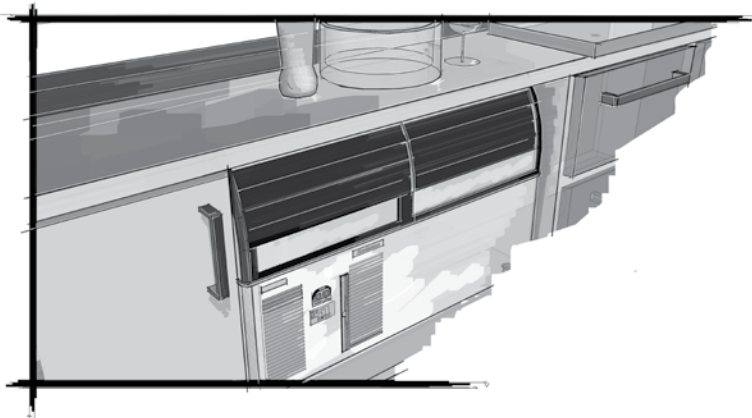
### Recommended bins:

NB 193, NB 393, NB 530

# High Production

\* For all possible bin combinations available, please refer to chart at page 60.

# Flaker series



## MF 46

**Cube size:**  
Superflake

**Condensing system:**  
Air cooled

**Max daily production:**  
305kg

## MF 47 Propane

**Cube size:**  
Superflake

**Condensing system:**  
Air cooled

**Max daily production:**  
265kg



## MF 56

**Cube size:**  
Superflake

**Condensing system:**  
Air cooled

**Max daily production:**  
590kg

## MF 58 Split

**Cube size:**  
Superflake

**Condensing system:**  
For connection to dedicated or  
centralised refrigeration system

**Max daily production:**  
600kg



### Dimensions (Head only):

W 538mm  
D 663mm  
H 645mm

### Recommended bins:

NB 193, NB 393, NB 530,  
NB 948



### Dimensions (Head only):

W 538mm  
D 663mm  
H 645mm

### Recommended bins:

NB 193, NB 393, NB 530,  
NB 948



### Dimensions (Head only):

W 538mm  
D 663mm  
H 785mm

### Recommended bins:

NB 193, NB 393, NB 530,  
NB 948



### Dimensions (Head only):

W 538mm  
D 663mm  
H 794mm

### Recommended bins:

NB 393, NB 530, NB 948

## High Production

- **Agion:** the technology that makes products cleaner and longer lasting with built-in protection working 24/7 to resist the growth of microbes and the development of unpleasant odors.
- **Electronic control:** ambient and water temperatures may change throughout the years but your ice maker will stay the same.
- **External indicator lights:** keeps ice maker's operations under constant surveillance.
- **Plug-and-work technology:** starts off and constantly produces ice thanks to a no-cycle harvesting system.
- **Global standard footprint:** strictly follows international imperial standards commonly adopted in the industry of reference.
- **Water in / ice out concept** (no cycles, zero water wastage): limits to almost zero excess energy, water and time wastage.
- **Head only ice maker:** requires a separate storage bin to store the ice produced.\*

## MF 59 Split CO2

**Cube size:**  
Superflake



**Condensing system:**  
For connection to dedicated or centralised refrigeration system

**Max daily production:**  
850kg



### Dimensions (Head only):

W 538mm  
D 663mm  
H 785mm

**Recommended bins:**  
NB 393, NB 530, NB 948

## MF 66

**Cube size:**  
Superflake

**Condensing system:**  
Air cooled

**Max daily production:**  
1070kg



### Dimensions (Head only):

W 1065mm  
D 698mm  
H 850mm

**Recommended bins:**  
UBH 1100

## MF 68 Split

**Cube size:**  
Superflake

**Condensing system:**  
For connection to dedicated or centralised refrigeration system

**Max daily production:**  
1150kg



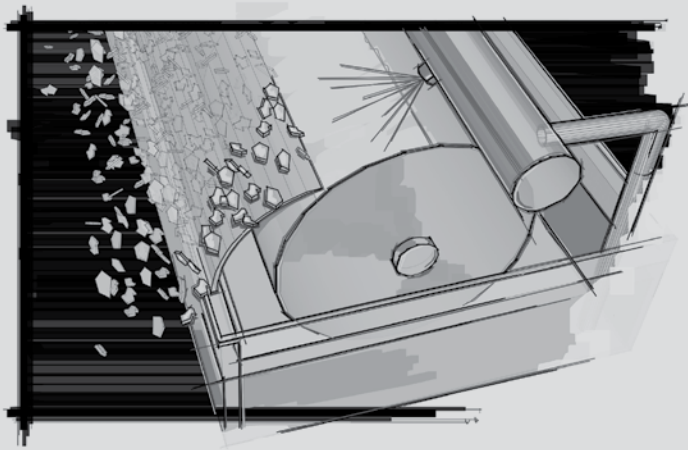
### Dimensions (Head only):

W 538mm  
D 663mm  
H 794mm

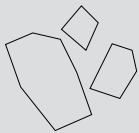
**Recommended bins:**  
NB 948, UBH 1100

\* For all possible bin combinations available, please refer to chart at page 60.

# The tough guys: Scale ice makers



The drum.



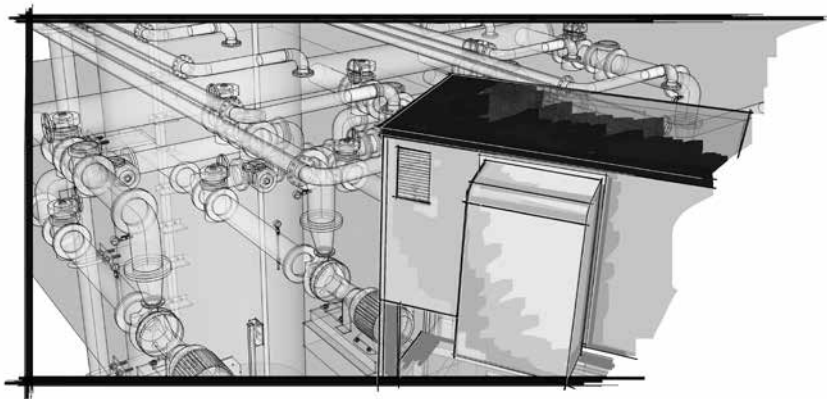
## **Scale Ice**

Residual water content 2%

---



# Horizontal drum



## MAR 76

**Cube size:**  
Scale ice

**Condensing system:**  
Air cooled

**Max daily production:**  
480kg



**Dimensions:**

W 875mm  
D 811mm  
H 1125mm

**Recommended bins:**  
UBH 1100

## MAR 106

**Cube size:**  
Scale ice

**Condensing system:**  
Air cooled

**Max daily production:**  
650kg



**Dimensions:**

W 875mm  
D 811mm  
H 1125mm

**Recommended bins:**  
UBH 1100

## MAR 126

**Cube size:**  
Scale ice

**Condensing system:**  
Air cooled

**Max daily production:**  
1000kg



**Dimensions:**

W 875mm  
D 811mm  
H 1125mm


**Recommended bins:**  
UBH 1100

---

## Compact configuration

- 
- **Stainless steel horizontal evaporating drum:** for a life-long working endurance.
  - **Floor standing compatible:** delivers ice straight into carts, trolleys or ice boxes.
  - **Plug-and-work technology:** starts off and constantly produces ice thanks to a no-cycle harvesting system.
  - **All water in / all ice out concept** (no cycles, zero water wastage): limits to almost zero excess energy, water and time wastage.
  - **Compact configuration:** includes evaporator, compressor and condensing units, and it is supplied without panels on the group (optional).
  - **Split configuration:** evaporator supplied only. For connections to remote condensing units, either dedicated or centralised.

### MAR 129 Split

**Cube size:** Scale ice 

**Condensing system:**  
For connection to dedicated or centralised refrigeration system

**Max daily production:**  
1000kg



**Dimensions:**

W 876mm  
D 813mm  
H 520mm

**Recommended bins:**

UBH 1100

### MAR 206

**Cube size:** Scale ice

**Condensing system:**  
Air cooled

**Max daily production:**  
1700kg



**Dimensions:**

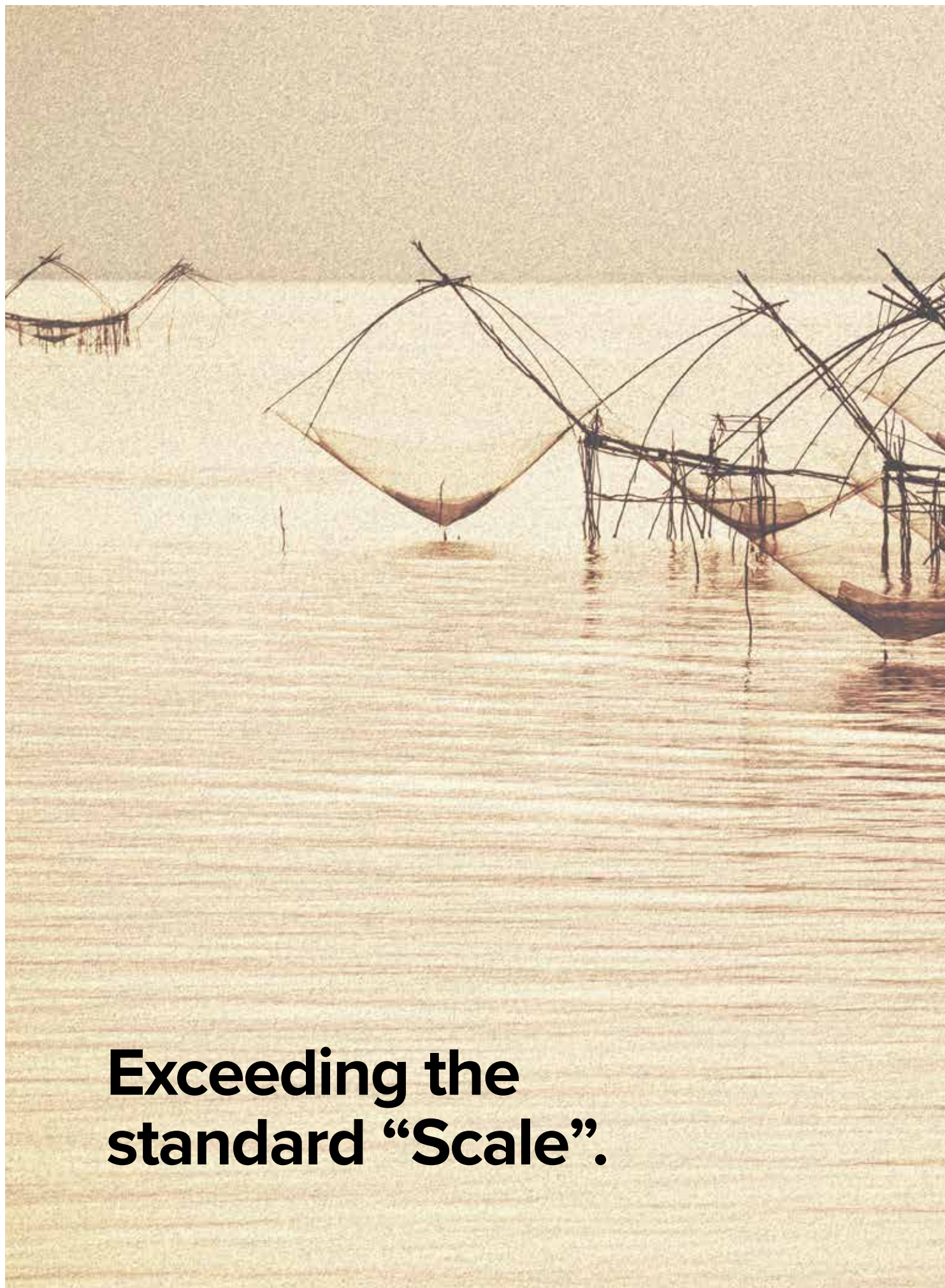
W 1296mm  
D 868mm  
H 1125mm

**Recommended bins:**

UBH 1600

---

## Split configuration



**Exceeding the  
standard “Scale”.**



# Ice storage systems

## NB Series



Slope front bins. Insulated, inside rounded corner, for daily turnover of ice. Easy to clean and maintain, removable gaskets.

The reinforced hinges provide enhanced durability. The slope front makes access to ice as easy as possible. From 129kg to 406kg storage capacity range. Compatible with any type of ice.

## UBH Series

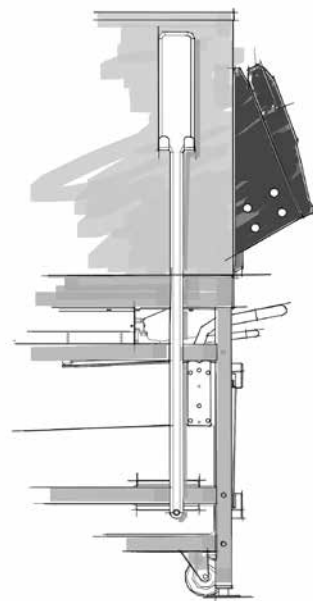


Upright bins. First-in first-out concept provides a constantly fresh ice supply and high level of hygiene.

Insulated, inside rounded corner, for higher capacity demand for ice and longer period stock.

Sturdy enough to sustain even the largest ice makers. Front windows allow operators to always keep an eye on the product inside. From 553 kg to 812kg storage capacity. Compatible with any type of ice.

## SIS Series



Upright bins with integral trolleys. First-in first-out concept provides a constantly fresh ice and high level of hygiene.

73kg capacity trolleys, insulated and top-closed with lids, facilitate ice transportation. Ice falls down into trolleys gravitationally, eliminating the need of tiresome shoveling. Insulated, inside rounded corner, for higher capacity demand for ice and longer period stock. Sturdy enough to sustain even the largest ice makers.

Front windows allow operators to always keep an eye on the product inside. From 291 kg to 759 kg storage capacity. Compatible with any type of ice.

# NB Series

## NB 193

**Storage capacity:**  
129kg



**Dimensions:**

W 560mm  
D 843mm  
H 1045mm

## NB 393

**Storage capacity:**  
178kg



**Dimensions:**

W 768mm  
D 843mm  
H 1039mm

## NB 530

**Storage capacity:**  
243kg



**Dimensions:**

W 770mm  
D 843mm  
H 1268mm

## NB 948

**Storage capacity:**  
406kg



**Dimensions:**

W 1237mm  
D 868mm  
H 1269mm

---

## Slope front storage bin

# UBH and SIS Series

## UBH 1100

**Storage capacity:**  
553kg



**Dimensions:**

W 1220mm  
D 1128mm  
H 1427mm

## UBH 1600

**Storage capacity:**  
812kg



**Dimensions:**

W 1524mm  
D 1125mm  
H 1731mm

---

## Upright storage bin

# SIS Series

## SIS 700

**Storage capacity:**  
318kg + 73kg ice cart



**Dimensions:**

W 880mm  
D 1265mm  
H 1802mm

## SIS 1350

**Storage capacity:**  
613kg + 73kg + 73kg ice carts



**Dimensions:**

W 1748mm  
D 1263mm  
H 1802mm

## Accessories carts and totes



---

## Ice shuttle storage bin

# Head / bin combination chart

	BIN	NB193	NB393	NB530	NB948
HEAD	Kg/24h	129	178	243	406
MXG328	147	✓			
MXG428	180	✓			
MCG437	155		✓	✓	
MXG438	180		✓	✓	
MXG638	310		✓	✓	CBT48EAMCD
C1448	636				✓
C1848	736				✓
C2148	869				✓
MV430	192	✓	CBT30EMCD	CBT30EMCD	
MV460	205		✓	✓	CBT48EAMCD
NW308	140	✓	CBT30EMCD	CBT30EMCD	
NW508	220	✓	CBT30EMCD	CBT30EMCD	
NW458	200		✓	✓	CBT48EAMCD
NW608	280		✓	✓	CBT48EAMCD
NW1008	465		✓	✓	CBT48EAMCD
NW1408	630			✓	CBT48EAMCD
MFN46	265	CBT22EFC	CBT30EFS	CBT30EFS	CBT48FMCD
MFN56	455	CBT22EFC	CBT30EFS	CBT30EFS	CBT48FMCD
MF26	114	✓	CBT30EFS	CBT30EFS	CBT48FMCD
MF36	195	✓	CBT30EFS	CBT30EFS	CBT48FMCD
MF46	305	CBT22RFC	CBT30EFS	CBT30EFS	CBT48FMCD
MF47	256	CBT22EFC	CBT30EFS	CBT30EFS	CBT48FMCD
MF56	590	CBT22EFC	CBT30EFS	CBT30EFS	CBT48FMCD
MF58	600		CBT30EFS	CBT30EFS	CBT48FMCD
MF59	850		CBT30EFS	CBT30EFS	CBT48FMCD
MF66	1070				
MF68	1150				CBT48FMCD
MAR76	480				
MAR106	650				
MAR126	1000				
MAR129	1000				
MAR206	1700				

✓ Perfect combination between ice-maker and bin  
CBT xxxxxx Need additional bin top

• Ice chute cut-out performed upon installation

UBH1100	UBH1600	SIS700	SIS1350	BIN	
552	812	318 + 73	613 + 73 + 7	Kg/24h	<b>HEAD</b>
				147	<b>MXG328</b>
•	•	•	•	180	<b>MXG428</b>
	•		•	155	<b>MCG437</b>
•	•		•	180	<b>MXG438</b>
•	•		•	310	<b>MXG638</b>
•	•			869	<b>C2148</b>
	•			893	<b>C1848</b>
•	•			869	<b>C2148</b>
				192	<b>MV430</b>
•				205	<b>MV460</b>
				140	<b>NW308</b>
				220	<b>NW508</b>
				200	<b>NW458</b>
				280	<b>NW608</b>
•	•			465	<b>NW1008</b>
•	•			630	<b>NW1408</b>
•		•		265	<b>MFN46</b>
•	•	•		455	<b>MFN56</b>
				114	<b>MF26</b>
				195	<b>MF36</b>
•		•		305	<b>MF46</b>
•		•		256	<b>MF47</b>
•	•	•		590	<b>MF56</b>
•	•	•		600	<b>MF58</b>
•	•	•		850	<b>MF59</b>
•	•		•	1070	<b>MF66</b>
•	•		•	1150	<b>MF68</b>
•	•	•	•	480	<b>MAR76</b>
•	•	•	•	650	<b>MAR106</b>
•	•	•	•	1000	<b>MAR126</b>
•	•	•	•	1000	<b>MAR129</b>
	•		•	1700	<b>MAR206</b>

# Other products

## HD 22

**Storage capacity:**

59kg

Dispensing unit to be combined with an ice maker.



**Dimensions:**

W 559mm  
D 850mm  
H 1352mm

## HD 30

**Storage capacity:**

81kg

Dispensing unit to be combined with an ice maker.



**Dimensions:**

W 763mm  
D 849mm  
H 1352mm

## HD 30 M

**Storage capacity:**

81kg

Dispensing unit to be combined with an ice maker.

**Operation:**

Two simple 'push' buttons for ice and water dispensing mechanism



**Dimensions:**

W 840mm  
D 850mm  
H 1400mm

## CRUSHMAN 360

**Crushes all ice cubes**

6kg per minute



**Dimensions:**

W 245mm  
D 430mm  
H 490mm

---

## Water & ice dispensers

## Ice crusher

# Global supplier for global markets

- 
- **Hotel & Resort**
  - **QSR & Casual Dining**
  - **Eateries & Fine Dining**
  - **Convenience Store & Food Retail**
  - **Wine Bar & Club**
  - **Coffee House & Bakery**
  - **Healthcare & Catering**
  - **Food Processing & Fishmonger**



# On call service where you are

Moffat provides full service backup, 24 hours a day, 7 days a week.

Our own Technical Service Department provides full support to a team of trained service personnel in each of our branches.

Strategically placed, authorised service providers offer backup to outlying areas and a national toll free number enables immediate access to our service network.

**1300 264 217 Moffat Australia**  
**moffat.com.au Moffat Australia**

Our network of dealer showrooms is well resourced to provide all the information you need on the Scotsman ice maker range.

To see them in action, book in for a demonstration at a Moffat Test Kitchen near you. Our knowledgeable sales team will help you in selecting the right models for your kitchen.

Introductory sessions can be booked online.





Above, clearly



Australia  
moffat.com.au

**Scotsman**<sup>®</sup>  
Ice Systems

Australia  
Moffat Pty Limited  
Victoria/Tasmania  
740 Springvale Road  
Mulgrave, Victoria 3170  
Telephone 03-9518 3888  
Facsimile 03-9518 3833  
vsales@moffat.com.au  
New South Wales  
Telephone 02-8833 4111  
nswsales@moffat.com.au  
South Australia  
Telephone 03-9518 3888  
vsales@moffat.com.au  
Queensland  
Telephone 07-3630 8600  
qldsales@moffat.com.au  
Western Australia  
Telephone 08-9413 2400  
wasales@moffat.com.au



an Ali Group Company



The Spirit of Excellence