

Sapiens



Blue Seal Electric Combi Steamer SAPIENS E7SDW 7 x 1/1 GN



- Manual controls
- Direct steam injection system
- Multi-point core temperature probe
- High visibility display
- Two speed fan
- 90 preset recipe programs
- 99 free programs with 4 cycles, automatic sequence
- Multiprogram keypad for quick, "press and go" program selection with nine positions
- Electronic thermostat 30° - 300°C
- Auto-reversing fan rotation
- Autoclima with automatic vent
- Fast-Dry, quick dehumidification of the cooking chamber
- Built-in retractable hand shower with tap
- SCS (Solid Clean System) automatic cleaning system with built in tank and automatic detergent dispenser
- 4 LED's to indicate actual cooking cycle in programme mode
- ECOVAPOR - automatic control of the steam saturation in the cooking chamber
- ECOSPEED - oven optimises and controls the delivery of energy to maintain correct cooking temperature
- USB connection

GENERAL FEATURES

- INCOLOY 800 type heating elements
- Stainless steel construction
- Perfectly smooth, water tight chamber
- Adjustable door hinge for optimal seal
- Halogen oven light
- Oven door handle mechanism allows either left or right operation
- Cool to touch door with double tempered glass with air chamber and interior heat-reflective glass

- Hinged inner glass for easy cleaning
- Constant self-diagnosis for error recognition
- IPX5 spray-proof and hose proof.
- Rack runners for GN loading

OPTIONAL FEATURES

- Right hinged door
- Side runners for 600 x 400 trays
- Configuration for connection to extraction hood



ECOVAPOR



ECOSPEED



AUTOCLIMA



FAST DRY



SOLID CLEAN

Sapiens

Blue Seal Electric Combi Steamer SAPIENS E7SDW 7 x 1/1 GN

Dimensions

| | |
|--------|-------|
| Width | 875mm |
| Depth | 825mm |
| Height | 820mm |
| Weight | 117kg |

Packed Dimensions

| | |
|--------|--------|
| Width | 950mm |
| Depth | 990mm |
| Height | 1000mm |
| Weight | 135kg |

Shelves

| | |
|----------------|------|
| 1/1 GN | 7 |
| Shelf Spacings | 70mm |

Installation requirements

(for precise installation instructions, please refer to the unit's installation manual).

Power connection requirements

Multi pole circuit breaker and all pole disconnection isolator switch installed near the appliance.

Supply line voltage

400-415V ~ 50Hz, 3P+N+E

Special voltage options available on request.

Power Connection

| | |
|--------------------------|------|
| Total (kW) | 10.5 |
| Convection power (kW) | 10 |
| Rated Current (A) (400V) | 15 |

Installation clearances

| | |
|---------|--------|
| - rear | 25mm |
| - right | 500mm* |
| - left | 50mm |

*Clearance required on fixed installations for service accessibility.

If heat sources are located near the RH side of the Sapiens combi, ensure that a minimum distance of 400mm is maintained.

Install in accordance with local body regulations only on horizontal surfaces and not against combustible walls.

Water connection requirements

- cold water
- flow pressure (200-500kPa)
- soft water connection*
- shut-off valve with return flow inhibitor and dirt filter
- water supply R³/₄
- R50 waste water connection

(*Water softener may be required. Please refer to installation manual for water treatment values.)



Australia
www.moffat.com.au

New Zealand
www.moffat.co.nz

Australia
Moffat Pty Limited

Victoria/Tasmania
740 Springvale Road
Mulgrave, Victoria 3170
Ph 03-9518 3888
Fax 03-9518 3833
vsales@moffat.com.au
www.moffat.com.au

New South Wales
Ph 02-8833 4111
nswsales@moffat.com.au

South Australia
Ph 03-9518 3888
vsales@moffat.com.au

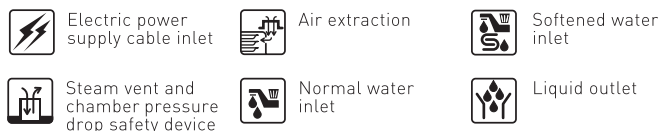
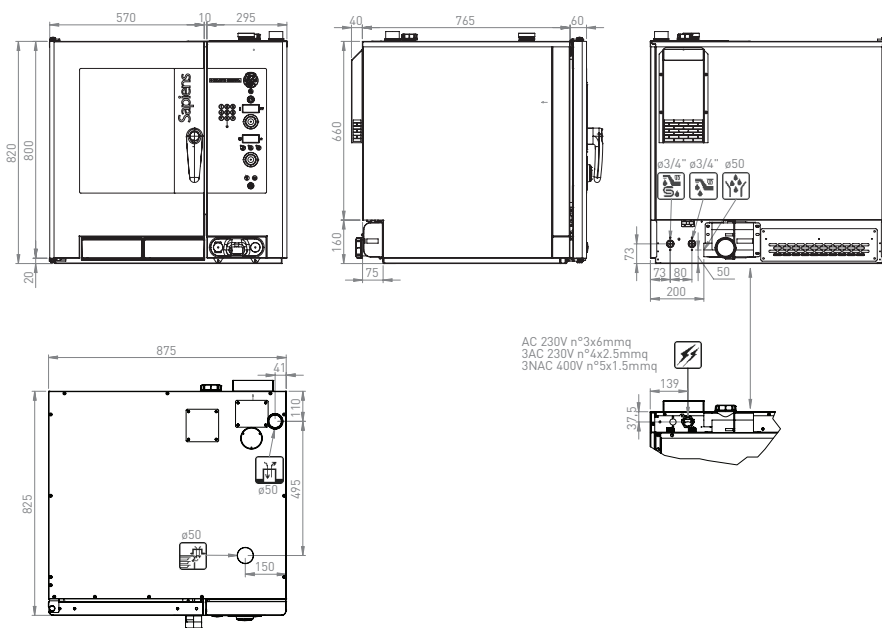
Queensland
Ph 07-3630 8600
qldsales@moffat.com.au

Western Australia
Ph 08-9202 6820
bgarcia@moffat.com.au

New Zealand
Moffat Limited

Christchurch
16 Osborne Street
Christchurch 8011
Ph +64 3-389 1007
Fax +64 3-389 1276
sales@moffat.co.nz

Auckland
Ph +64 9-574 3150
sales@moffat.co.nz



In line with policy to continually develop and improve its products, Moffat Limited reserves the right to change specifications and design without notice.

© Copyright Moffat Ltd
Moffat 7.14 / 1413

