

XM

Economy Passthrough Dishwasher – 450mm Rack W 630mm x D 650mm x H 1530mm

When kitchen space is tight the Washtech XM must be considered. With it's incredibly small footprint and compatibility with 600mm deep benching, the XM is the obvious solution.

With robust construction and simple electromechanical controls, easy maintenance and long product life are assured. HACCP food safety reporting is also now simpler than ever with the addition of digital wash and rinse temperature displays, making for easy and clear readings.

Standard Features

- Autostart on door closure 2 minute cycle
- Washes up to 840 plates per hour / 960 glasses per hour
- Compatible with 400mm to 450mm glass and dish racks
- QuikConnect installation with everything you need:
 - Water supply hose
 - Dual detergent and rinse aid pumps with injector lines
 - Drain pump outlet hose
 - 15 amp plugset
 - No commissioning required
- Reliable results through upper and lower wash/rinse arms with precision moulded jets
- Easily serviced electromechanical design
- Durable stainless steel construction
- Low hot water consumption of 2.6 litres per cycle
- Moffat's Comprehensive 5-2-1 Warranty

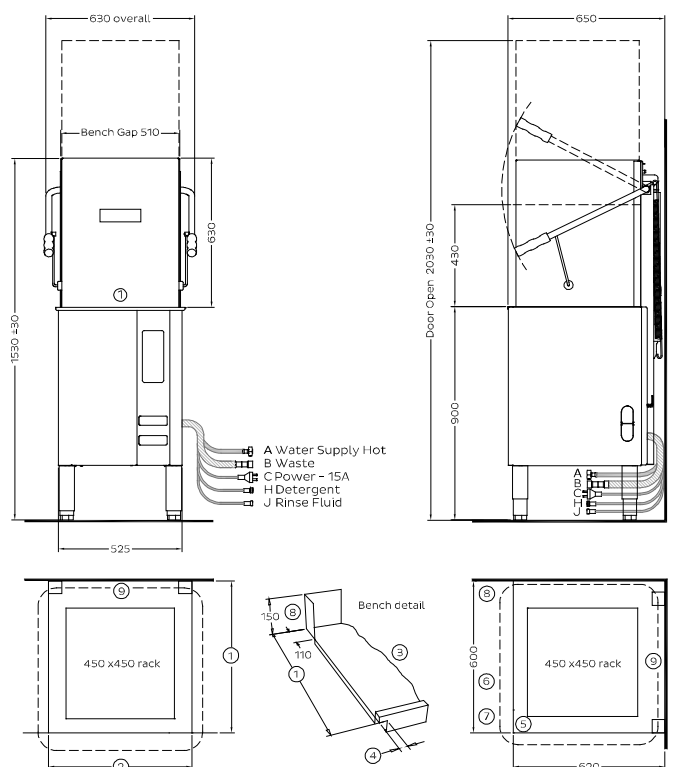
Includes:

- 2 x 600 70081 - 450mm dish rack
- 1 x 600 70080 - 450mm cup rack
- 1 x C660503 - cutlery container



XM

Economy Passthrough Dishwasher – 450mm Rack
W 630mm x D 650mm x H 1530mm



In-line Installation

- ① Minimum Depth 600
- ② Bench gap 510
- ③ left side is mirror image
- ④ Hotch 25

Corner Installation

- ⑤ wall to front inside corner
- ⑥ machine must face left for controls access
- ⑦ allow 300 clearance to front for service access
- ⑧ splashback return no higher than 150
- ⑨ No obstruction behind machine

A Hot Water	
Temperature	65°C
Connection	3/4" male hose supplied
Pressure	200-350kPa
Flow	20 litres per min
Quality	Potable & soft
Backflow Prevention	Atmospheric Vacuum Breaker
Consumption	2.6 litres per cycle

B Waste	
Connection	Hose supplied for 38mm open standpipe 750 high or connection to sink tap

C Electrical	
Single phase	240V 50Hz 15A plugset supplied

Maximum Power Consumption

Single phase	3.37kW
--------------	--------

Heating

Wash	2.5kW
Rinse	3.0kW

Dimensions

Width	630mm
Depth	650mm
Height	1530mm
Weight	73kg

Packed Dimensions

Width	695mm
Depth	750mm
Height	1450mm
Weight	94kg
Cubicmetres	0.77m³

Water Quality Requirements

Hardness		ppm				pH
Min		20				7
Max		100				8
Ions	Cl ⁻	SO ₄	Fe	Mn	Cu	CL ₂
Max mg/l	100	400	0.1	0.5	0.05	0.1

Refer operator manual for installation instructions



MOFFAT®

moffat.com.au

Australia
Moffat Pty Limited

Victoria/Tasmania
740 Springvale Road
Mulgrave, Victoria 3170
Telephone 03-9518 3888
Facsimile 03-9518 3833
vsales@moffat.com.au
www.moffat.com.au

New South Wales
Telephone 02-8833 4111
nswsales@moffat.com.au

South Australia
Telephone 03-9518 3888
vsales@moffat.com.au

Queensland
Telephone 07-3630 8600
qldsales@moffat.com.au

Western Australia
Telephone 08-9202 6820
bgarcia@moffat.com.au

ISO9001

All Washtech products are designed and manufactured by Washtech using the internationally recognised ISO9001 quality management system, covering design, manufacture and final inspection, ensuring consistent high quality at all times.

In line with policy to continually develop and improve its products, Washtech reserves the right to change specifications and design without notice.



© Copyright Moffat Ltd
Moffat / 06.17

an Ali Group Company



The Spirit of Excellence