



1232 Tamborine Oxenford Road
Wongawallan, QLD 4210.

ABN: 77 125 447 289

PH: 0419 024 336

+61 7 5556 0562

E: admin@gcbarges.com.au

Gold Coast Barge Services Pty Ltd

Capability Summary

Company Overview

Our Aim is to consistently deliver efficient, effective service to our clients.

Delivering a wide range of marine services and associated products on budget and on time.

Providing maintained, compliant equipment with experienced, qualified staff that work within our company guidelines that seeks continual improvement within the WHS, Quality and Environmental standards.

(ISO45001:2018 and ISO 9001:2015)





1232 Tamborine Oxenford Road
Wongawallan, QLD 4210.

ABN: 77 125 447 289

PH: 0419 024 336

+61 7 5556 0562

E: admin@gcbarges.com.au

Gold Coast Barges operates under a certified Integrated Management System (IMS) aligned with the following current standards and legislative requirements:

- ISO 9001:2015 – Quality Management Systems
- ISO 45001:2018 – Occupational Health and Safety Management Systems (superseding AS/NZS 4801:2001)
- ISO 14001:2015 – Environmental Management Systems (superseding AS/NZS ISO 14001:2004)
- Work Health and Safety Act 2011 and Work Health and Safety Regulation 2011 (QLD)

Gold Coast Barges is committed to operating responsibly, safely, and sustainably through the implementation of an Integrated Management System. Our commitments include:

- **Compliance** with all applicable legislation, codes of practice, standards, and industry guidelines.
- **Providing a safe and healthy work environment** for employees, contractors, visitors, and clients—both on our sites and at customer locations.
- **Defining clear roles and responsibilities** to ensure accountability in occupational health and safety (OHS).
- **Setting and reviewing measurable objectives and targets** to eliminate work-related incidents and drive continuous improvement.
- **Maintaining safe systems of work**, supported by documented procedures and the use of environmentally responsible materials.
- **Fostering open consultation and communication** with employees, contractors, and clients to enhance safety outcomes and decision-making.
- **Implementing and maintaining a quality management system** that improves efficiency, productivity, and customer satisfaction.
- **Allocating adequate resources** to support the effective operation of our management systems across the organisation.
- **Promoting a culture of zero-defect performance** and continuous improvement.
- **Conducting all activities in an environmentally responsible manner**, managing risks, and supporting ecologically sustainable development.





1232 Tamborine Oxenford Road
Wongawallan, QLD 4210.

ABN: 77 125 447 289

PH: 0419 024 336

+61 7 5556 0562

E: admin@gcbarges.com.au

Gold Coast Barges have purpose-built Maintenance vessels, specifically designed to suit the challenges the smaller canals and waterways of Southeast Qld present.

Icebreaker

The flagship 'Icebreaker' is a highly maneuverable powered barge that carries 2 truckloads of material making waterfront maintenance attainable.

'Icebreaker'; has been the choice of many contractors to undergo a wide variety of projects. Local Councils in Redland, Logan, Brisbane, Ipswich, Moreton Bay and Gold Coast have engaged her services over the past 15years. 'Icebreaker' is equipped with a 5t excavator with a tilting hitch for incredible control, grab, ripper and several buckets, hydraulic hammer and auger.



Ships Name:	Icebreaker	Unique Identifier Number:	427433
Owners Details:	Gold Coast Barge Services P/L	Deck loading Capacity:	22t
Type of Vessel:	Domestic Commercial Vessel	Model:	Powered Landing Barge
Maximum Persons:	12	Construction Material:	Steel
Length:	11.90m	Breadth:	6.00m
Depth:	1.10m	Draft:	1.00m
Displacement Weight:	53.72t approx.	Hull Type:	Displacement (full)
Date of Build:	2000	Model Number:	4HK1XYBW-02
Engine:	Isuzu	Fuel Type:	Diesel
Serial Number:	700213	Survey:	Class 2E
Gearbox:	Hydraulic Pod Type	Areas of Operations:	Smooth/Partially Smooth Wtrs





1232 Tamborine Oxenford Road
Wongawallan, QLD 4210.

ABN: 77 125 447 289

PH: 0419 024 336

+61 7 5556 0562

E: admin@gcbarges.com.au

Kirra

'Kirra' is a 6m barge. She is equipped with a 1t deck crane and a 1t winch and moonpool. "Kirra" was a purpose-built mooring barge but has since been fitted with twin Yamaha motors making her maneuverable and serious workhorse.



Ships Name:	Kirra	Unique Identifier Number:	446475
Owners Details:	Gold Coast Barge Services P/L	Deck loading Capacity:	900kg
Type of Vessel:	Propelled Barge	Construction Material:	Alloy
Maximum Persons:	10	Breadth:	4.02m
Length:	5.71m	Hull Type:	Aluminium
Depth:	0.90m	Fuel Type:	Petrol
Displacement Weight:	900kg	Survey:	2D
Engine:	Yamaha	Areas of Operations:	Partially Smooth Waters





1232 Tamborine Oxenford Road
Wongawallan, QLD 4210.

ABN: 77 125 447 289

PH: 0419 024 336

+61 7 5556 0562

E: admin@gcbarges.com.au

Sassy

'Sassy' is a 6m work punt. Her Mercury outboard has a pushing prop making her the perfect partner for Dumbo as a push punt. She has a pushing frame. 'Sassy' also has a lifting frame which is used in salvages and mooring relocations.



Ships Name:	Sassy	Unique Identifier Number:	416427
Owners Details:	Gold Coast Barge Services P/L	Deck loading Capacity:	700kg
Type of Vessel:	Work Punt/Barge	Construction Material:	Aluminium
Maximum Persons:	8	Breadth:	2.20m
Length:	5.9m	Draft:	0.02m
Depth:	0.20m	Hull Type:	Planning Hull
Displacement/Weight:	700kg	Model Number:	1F914571D
Date of Build:	2013	Fuel Type:	Unleaded
Engine:	Mercury Seapro 90	Survey:	2D
Serial Number:		Areas of Operations:	Partially Smooth Waters





1232 Tamborine Oxenford Road
Wongawallan, QLD 4210.

ABN: 77 125 447 289

PH: 0419 024 336

+61 7 5556 0562

E: admin@gcbarges.com.au

Elvis

'Elvis' is a 6m work punt. The roof is removable making the vessel flat deck punt. The roof has a safety rail – which is engineered to hold 2 persons whilst secured to a bridge or permanent structure. This makes 'Elvis' the perfect solution to bridge inspections and correctional works amongst other applications.



Ships Name:	Elvis	Unique Identifier Number:	416383
Owners Details:	Gold Coast Barge Services P/L	Deck loading Capacity:	960kg
Type of Vessel:	Power Monohull	Model:	Pontoon
Maximum Persons:	10	Construction Material:	Aluminium & Fibreglass
Length:	5.95m	Breadth:	2.45m
Depth:	0.72m	Draft:	0.72m
Date of Build:	2000	Hull Type:	Fibreglass
Engine:	Honda 4 Stroke 33.1kw	Model Number:	AUAAB000206QT2
Serial Number:	BF50DK4LRTU	Fuel Type:	Petrol
Survey:	Class 2E	Areas of Operations:	Smooth Waters





1232 Tamborine Oxenford Road
Wongawallan, QLD 4210.

ABN: 77 125 447 289

PH: 0419 024 336

+61 7 5556 0562

E: admin@gcbarges.com.au

Dumbo

'Dumbo' 12 x 6m
transportable steel dumb
barges (2 z 3m wide
sections) . Spudded with
hardwood sacrificial deck.
20t capacity. Class D
Fabulous under bridges for
that stable platform you
need for EWP's, Scissor lifts
and drill rigs. Also great for
excavation works and
general building material
movements.



Ships Name:	Dumbo	Unique Identifier Number:	465412
Owners Details:	Gold Coast Barge Services P/L	Deck loading Capacity:	40t
Type of Vessel:	Domestic Commercial Vessel	Model:	Dumb Barge
Maximum Persons:	12	Construction Material:	Steel
Length:	12m	Breadth:	6.182m (side/side config)
Depth:	1.2m	Model Number:	TBD12-22 & TDB12-23
Displacement/Weight:	48.33t (side/side config)	Survey:	Class 2D
Date of Build:	2016	Areas of Operations:	Smooth Waters





1232 Tamborine Oxenford Road
Wongawallan, QLD 4210.

ABN: 77 125 447 289

PH: 0419 024 336

+61 7 5556 0562

E: admin@gcbarges.com.au

Dumbo 2

Dumbo 2: 12mx 6m (12mx 6m when assembled) steel, road transportable dumb barge. Spudded with sacrificial wooden deck and rock bin. Deck Capacity 40t. Looks the same as Dumbo 1 but has twice the deck capacity.

Class: C restricted (Qld)



Ships Name:	Dumbo 2	Unique Identifier Number 2a:	464223
Owners Details:	Gold Coast Barge Services P/L	Unique Identifier Number 2b:	464224
Type of Vessel:	Domestic Commercial Vessel	Deck loading Capacity:	40t
Maximum Persons:	3	Model:	Non-Propelled Barge
Length:	11.99m	Construction Material:	Steel
Depth:	1.2	Breadth:	3m
Max Displacement Wt.:	53.37t	Draft:	0.752
Maximum Deadweight:	40.50t	Hull Type:	Steel
Date of Build:	2024	Survey:	Class 2C restricted
Areas of Operations:	Smooth Waters		





1232 Tamborine Oxenford Road
Wongawallan, QLD 4210.

ABN: 77 125 447 289

PH: 0419 024 336

+61 7 5556 0562

E: admin@gcbarges.com.au

Flatty

'Flatty' is 6.5m x 2.8m Aluminum Work Barge with a deck capacity of 3t. Perfect for hard-to-reach areas. Proven to be a great fireworks punt and general use punt. Equipped with a winch and is now available with handrails on the sides.



Ships Name:	Flatty	Unique Identifier Number:	457643
Owners Details:	Gold Coast Barge Services P/L	Deck loading Capacity:	2.5t
Type of Vessel:	Propelled Barge	Model:	6.5m Aluminium Work Barge
Maximum Persons:	4	Construction Material:	Aluminium
Length:	6.61m	Breadth:	2.8m
Depth:	0.6m	Draft:	0.12m
Displacement/Weight:	3000kg (max dead weight)	Hull Type:	Aluminium
Date of Build:	2022	Fuel Type:	Petrol
Engine:	Suzuki	Survey:	2D
Serial Number:	06002F-240464	Areas of Operations:	Partially Smooth Waters





1232 Tamborine Oxenford Road
Wongawallan, QLD 4210.

ABN: 77 125 447 289

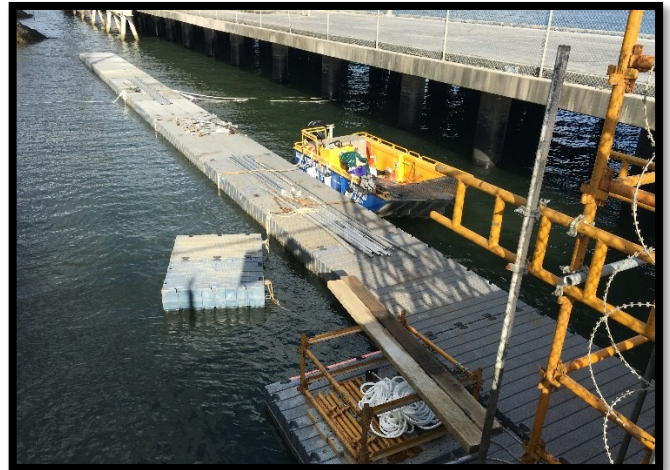
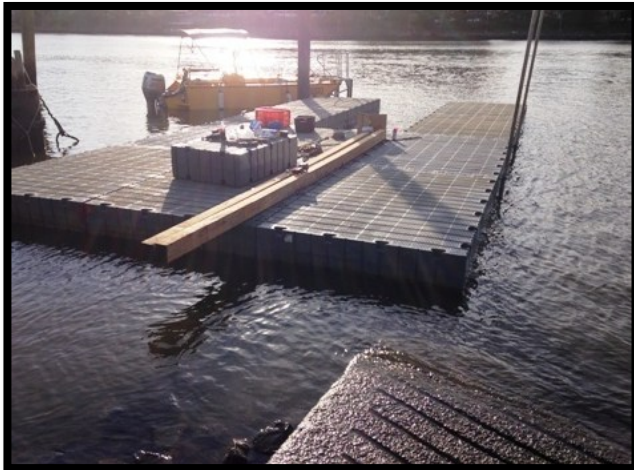
PH: 0419 024 336

+61 7 5556 0562

E: admin@gcbarges.com.au

Modular Work Platform (MWP)

Modular Work platforms : Gold Coast Barges has MWPs, work punts, and handrails, which allow crews to more effectively adapt to the work area. These versatile 3m x 2m connectable platforms can be customised to any shape desired and can be moved in and out as required, fabulous for builders and painters working in smooth waters near permanent structures, bridge repairs and wharf works. It can also be used as walkways to and from the job site.





1232 Tamborine Oxenford Road
Wongawallan, QLD 4210.

ABN: 77 125 447 289

PH: 0419 024 336

+61 7 5556 0562

E: admin@gcbarges.com.au

Gold Coast Barges – Capability Overview

Gold Coast Barges delivers a comprehensive range of marine and civil services, tailored to meet the needs of government, commercial, and private sector clients. Our experienced team is equipped to manage complex projects in challenging environments, with a strong focus on safety, quality, and environmental responsibility.

Services Include:

- **Marine Civil Works**
 - Rock armouring and scour protection
 - Rock bagging for bridge pylons
 - Gabion basket installation
 - Groyne construction and repair
 - Seawall construction
 - Canal revetment wall construction and maintenance
 - Truline sheet piling walls
 - Revetment wall repair and correction
- **Maintenance & Repairs**
 - Scheduled marine infrastructure maintenance
 - Pontoon and marina dredging (including confined spaces)
 - Drainage reinstatement and subsidence correction
 - Concrete spalling repairs
 - Balustrade replacement
 - Jetty and wharf refurbishment, upgrades, and removal
 - Boat ramp installation, removal, cleaning, and repair
 - Non-friable asbestos jetty removal
 - Handrail installation
 - Wooden pile fibreglass wrapping
 - Bridge repairs and maintenance
- **Environmental & Dredging Services**
 - Flood debris removal
 - Beach vegetation management and profiling
 - Sand reinstatement and relocation
 - Marine and aquatic vegetation removal
 - Silt curtain installation and maintenance
- **Specialised Services**
 - Screw piling and augering
 - Marine salvage operations
 - Logistical support for remote and isolated destinations
 - Fireworks platform deployment
 - Bridge inspections

Project Imagery & References

To view detailed imagery of our completed projects, please contact us at info@gcbarges.com.au. We are happy to provide visual documentation tailored to your area of interest.

Please visit our website to see the Gold Coast Barges full range of recent projects, vessels and services.

www.gcbarges.com.au

For our canal wall maintenance arm.

www.canalwalldoctor.com.au