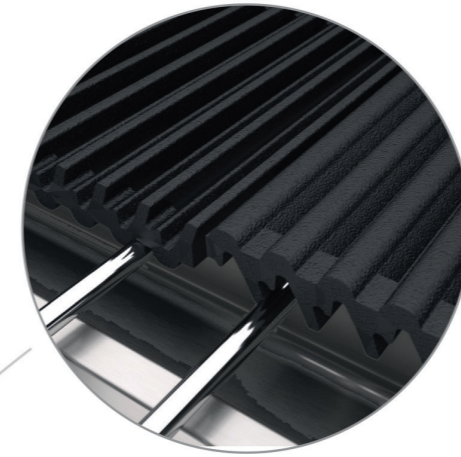
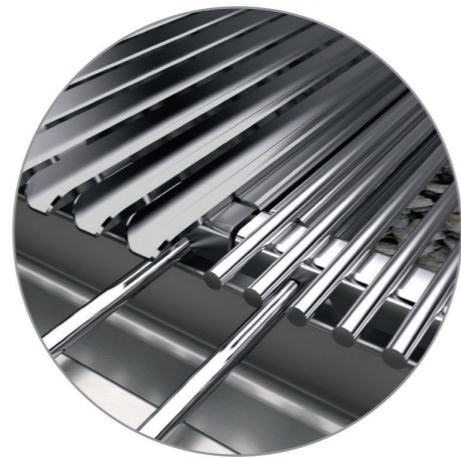


Lava Rock Grills

- 2 height adjustable stainless steel cooking grille;
- Removable drawer for fat collection
- Heating obtained via high power stainless steel burners powered and controlled by valves for gradual power adjustment;
- Piezo ignition;
- Standard meat grille, cast iron fish/meat and fish grille available as accessories;
- Inert volcanic lava with radiant features compatible with food.



Cast-iron grill plate for meat and fish (optional).



Steel grill plate in both meat and fish versions.



Distance from heat to grill plate is adjustable using side levers in order to provide different cooking temperatures.

