



Self-contained ice maker - Sprayer system Daily production up to 32 kg

Brema's new Green Tech CB range offers self-contained ice machines for bench top, under bench or free-standing installation. These machines produce attractive, crystalline cubes weighing 13g which rapidly chill and enhance the appearance of any beverage.

The Brema CB249A is a bench top ice cube machine that produces 29kg of ice per 24 hours and has storage capacity of 9kg.

The CB range of self-contained ice cube machines is the perfect fit for cafes, restaurants, hotels, bars and nightclubs.

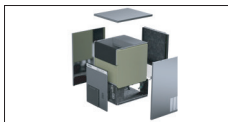
► Features

- Compact and crystal cube
- AISI 304 SS Scotch Brite finish
- Tropical class +43°C rated
- Removable and cleanable antiscald filter
- Air cooling system
- Easy cleanable internal rounded surfaces
- HCFC-Free insulated storage
- RoHS Free
- Disappearing insulated door
- 9kg storage capacity
- Produces 13g cubes
- Automatic Washing System (AWS)
- R290 refrigerant (HFC Free)
- Integrated Drain Pump (DP)

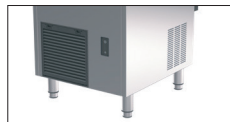


► Accessories

- Water inlet hose
- Drainage hose
- External water filter
- Pressure limiting valve
- Plastic ice scoop
- 5mm plastic feet (4)



Green Tech Design



Side openings for better ventilation



Automatic Washing System

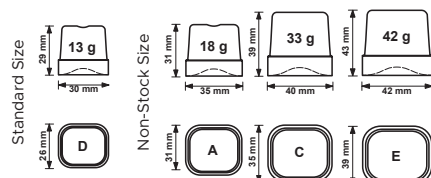


Easy cleanable internal rounded surfaces



Plug-in electrical connection

► Ice cube size



► Production 24h

Air temp.	Water temp.	kg
10° C	7° C	32
21° C	15° C	29
32° C	21° C	26

3 Years Warranty

► Certifications available for this model



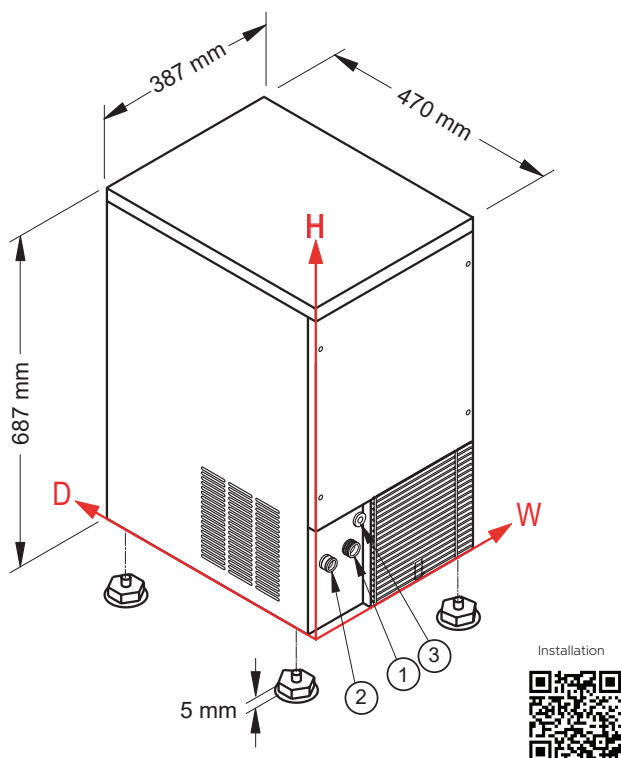


Ice Cube

CB249A-HC-DP



Self-contained ice maker - Sprayer system Daily production up to 32 kg



► Working conditions

- Location: **Indoor**

	Min	Max
Ambient temperature	+10°C	+43°C
Water temperature	+3°C	+32°C
Voltage	-10%	+10%
Water inlet pressure	1bar (14 psi)	6bar (84 psi)

► Integrated drain pump benefits

- Reduced installation costs with the ability to position the ice maker up to 4 meters away from a drain.
- Plug and play easy installation makes setting up your ice maker quicker and easier.
- Superior hygiene as excess water is moved out of the ice maker creating a more sanitary environment.



► Connections

All measures are referred to the rear bottom-left corner (W-H-Ø)

- ① Water in.: 130mm - 145mm - 3/4"
- ② Water out.: 49mm - 140mm - 24mm
- ③ Electrical connections.: 95mm - 209mm

► Technical Information

Production in 24h	29kg
Store capacity, up to	9kg
Cooling system	A
Kind of cube (standard)	D-13g
Kind of cube (non-stock)	A-18g, C-33g, E-42g
Refrigerant	R290
Standard voltage	240V - 50 Hz - 10A (lead with plug supplied)
Power consumption*	270W

Finish	AISI 304 stainless steel
Clearance	100mm sides + back
Water consumption	A: 5.1 l/kg
Sizes (W-D-H)	387 - 470 - 687
Sizes with pack (W-D-H)	440 - 520 - 860
Net weight	32.5kg
Gross weight	39kg

All the technical information need to be considered at the following conditions:
Sizes without feet
Standard Cube (13 g)
Ambient temperature +21°C
Water temperature +15°C
*Average power consumption at +43°C (standard voltage)

Models and specifications are subject to change without notice



www.comcater.com.au



1300 309 262



contactus@comcater.com.au