

CLEVELAND KET-20T

ELECTRIC FLOOR MOUNTED KETTLES

Lever tilt, electric, self contained single kettle with 80lt capacity, 2/3 steam jacketed. Solid state controls for accurate temperature control ($\pm 1^{\circ}\text{C}$) and low water safety. All exterior surfaces are stainless steel. 415 volts three phase, 15.8 amps.



STANDARD FEATURES

- Manual tilting, balanced design
- Welded-in heating elements
- 50 psi safety valve
- Splash proof element cover with a double gasket seal
- Self-contained, easily installed
- Steam jacket filled with treated water, venting and/or refilling is not required
- Accurate, consistent solid state temperature controls (mechanical thermostate not as accurate) - less than $\pm 1^{\circ}\text{C}$ variance (ideal for simmering). Operating temperature range from 63°C - 127°C . Control panel includes: LED indicator for heat cycle, LED indicator for low water, Power ON/OFF switch, Adjustable temperature control dial
- Re-inforced rolled rim design prevents damage to kettle rim
- Easily cleaned: kettle and all exterior surfaces are of type 304 stainless steel with an #4 finish
- Rear mounted easy access pressure gauge and pressure relief valve to prevent tampering. Color coded easy to read pressure gauge with "green" and "vent air zone"
- Water resistant controls, splash-proof construction
- 50 psi steam jacket rating for higher cooking temperatures
- Solid state water level control
- 152mm level adjustable feet
- Large pouring lip for high capacity and chunky products

OPTIONAL FEATURES

- Lift-off Cover (CL20)
- Kettle Markings (KM)
- Basket Strainer (BS-)
- High Wattage Operation (HW)
- Protective Control Panel (PCE)
- Double pantry faucet with swing spout and mounting bracket (DPK & FBKT)
- Type 316 Stainless Steel Kettle interior for high acid food products (316)
- Kettle Accessory Kit (KAK)
 - Clean-up Brush (CB) - 36" Kettle Paddle (KP)
 - 36" Kettle Whip (KW) - 36" Kettle Brush (KB)
 - Draw-off Brush (DB) - 24 oz. Ladle (KL)
- Measuring Strip (MS)
- Food Strainer (FS)
- Single pantry faucet with swing spout (SPK)

SPECIFICATIONS ARE SUBJECT TO CHANGE WITHOUT NOTICE.

From the world of Comcater!

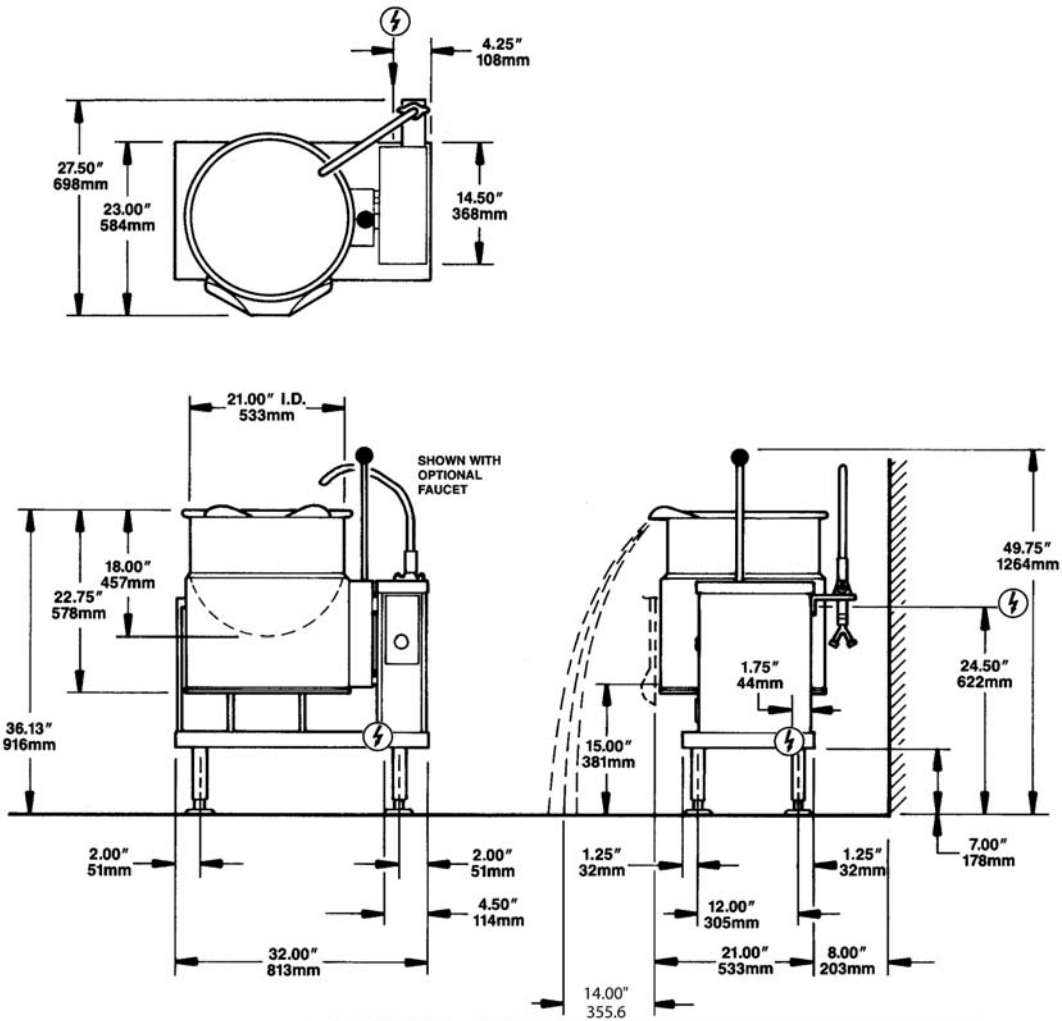
National Head Office
156 Swann Drive
Derrimut VIC 3030
Tel: +61 3 8369 4600
Fax: +61 3 8369 4695

Melbourne
96-100 Tope Street,
South Melbourne VIC 3205
Tel: +61 3 8369 4600
Fax: +61 2 8699 1299

Sydney
20/4 Avenue of the Americas
Newington, NSW 2127
Tel: +61 2 9748 3000
Fax: +61 2 9 648 4762

Brisbane
1/62 Borthwick Avenue
Murarrie QLD 4172
Tel: +61 7 3399 3122
Fax: +61 7 3399 5311

CLEVELAND KET-20T



ELECTRIC ⚡													WATER ⚡		CLEARANCE	
ELECTRICAL SUPPLY STANDARD WATTAGE													3/8" O.D. copper tube or 1/2" N.P.T. pipe. When ordered with optional faucet.		RIGHT = 0" LEFT = 0" REAR = See drawing	
208 VOLTS			240 VOLTS			480 VOLTS			220/380 VOLTS			Dual voltage of 220 / 380 (shown on chart) require a four wire, three phase electrical supply.				
CAPACITY	KW	AMPS	KW	AMPS	KW	AMPS	AMPS	KW	AMPS	AMPS	KW					
GALS.	LITERS	1PH	3PH	1PH	3PH	1PH	3PH	1PH	3PH	1PH	3PH	1PH	3PH			
20	80	12.3	59.1	34.2	16.4	68.1	39.4	13.1	27.3	15.8	13.6	N/A	20.7			

Cleveland Range reserves right of design improvement or modification, as warranted.

TECHNICAL DATA

Power Supply	415V, 3 Phase, 15.8amp
Energy Rating	16.4kW

SPECIFICATIONS ARE SUBJECT TO CHANGE WITHOUT NOTICE.



www.comcater.com.au

PROUDLY DISTRIBUTED BY: