



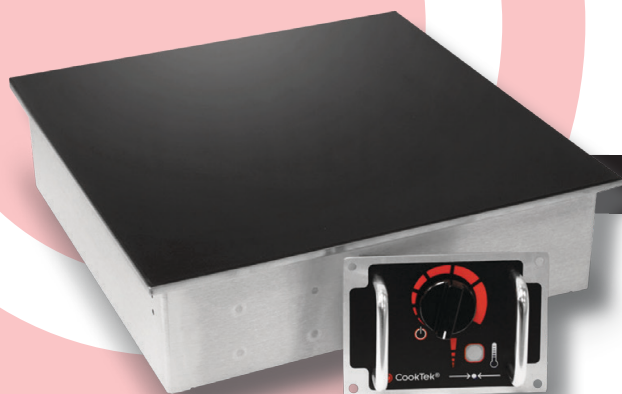
DROP-IN SINGLE BURNER (HOB) COOKTOP

with Standard Controls

MCD2500 & MCD3500

601204

601404



PROJECT _____

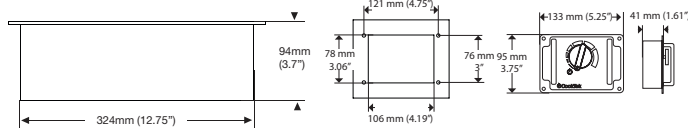
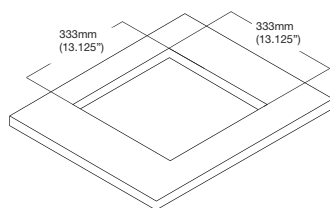
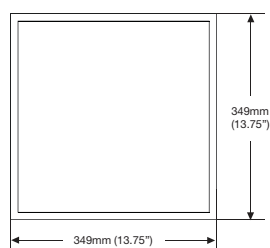
ITEM _____

QUANTITY _____

DATE _____

TECHNICAL DATA:

Dimensions (W x D x H):	324 x 349 x 94	
Cutout (W x D):	333 x 333	
Total Weight:	6.8Kg	
Wall Clearance:	51mm (152mm below)	
Max Ambient Temperature:	50°C	
Model:	MCD2500	MCD3500
Total Connected Load:	2.4kW	3.5kW
Volts (Single Phase):	220-240 V	220-240 V
Amps	10A	15A



The CookTek® Drop-in Single Burner (Hob) Cooktop with Standard Controls boasts a drop-in countertop design with a stainless steel aluminum housing, and a high temperature glass-ceramic top intended for commercial kitchens and restaurants. An automatic shut-off feature, integral cooling fan, and self-diagnosing microprocessor allow for a safe kitchen environment. Each unit is equipped with 22 temperature settings and 20 precise power settings to ensure maximum and efficient heating of any induction-compatible pan.*

FEATURES:

- Drop-in design with stainless steel and aluminum housing
- High-quality internal electronics and heavy gauge Litz wire
- Easy-to-clean high-temperature glass-ceramic top
- Automatic pan detection allows for instant energy transmission to pan
- LED display for user feedback
- Even heat distribution across bottom of cookware
- Programmed with 22 temperature settings and 20 power cook settings
- Automatic shut-off feature prohibits overheating
- Temperature range from 29°C - 260°C
- Microprocessor monitors vital components to check for overheating, power supply issues, and more
- Integral fan keeps internal components cool
- Available in 10A & 15A

*Induction cooking requires the use of induction-compatible (i.e. magnetic) cookware.

CERTIFICATIONS



Due to continuous product research and development, the information contained herein is subject to change without notice.

Revision: January 14, 2020 1:02 PM

www.stoddart.com.au

www.stoddart.co.nz

