

# K45 / 55 / 70

## Food processors

*High powered, built to last. The ideal machines for the professional chef.  
Chop, mince, grind and blend any preparation your recipe requires.*



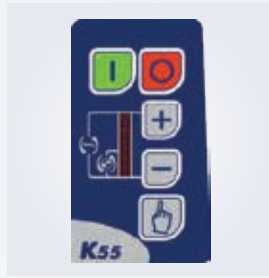
- ▶ **4,5, 5,5, and 7 lt** capacities are a complement to any size kitchen
- ▶ A unique **scraper / emulsifier** allows you to prepare everything from meats to creams
- ▶ Easily **upgrade** to a combined machine with a special kit (variable speed models)
- ▶ The unique design of bowl and rotor blades guarantees **perfect results** when mixing both large or small quantities

- ▶ Special **pulse function** for **coarse chopping** of large pieces
- ▶ Rotor can be placed in a special holder for storage
- ▶ **Maximum hygiene** thanks to the ergonomic design with rounded edges





Transparent lid



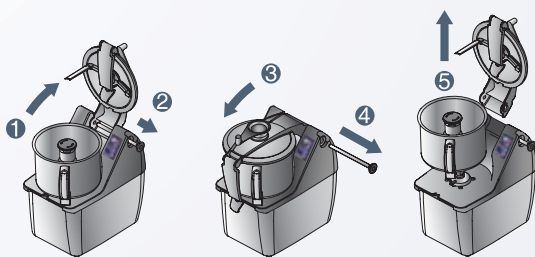
Variable speed control

- ▶ Stainless steel bowl with high chimney to **increase** the real liquid **capacity**, with round corners and ergonomic handle
- ▶ **Dedicated rotors** with **smooth** or **microtoothed** blades as well as specific for **emulsions**
- ▶ **Ergonomic handle** for easy placement of the bowl and self-locking mechanism for **maximum stability**
- ▶ Asynchronous motor for **silent** operation and **longer life**

- ▶ **Transparent lid** permits the operator to check the preparation during operation and to **add ingredients** without opening the lid
- ▶ Hinged cover, when lifted, remains open to permit a fast, easy and practical check of the preparation
- ▶ Waterproof and user friendly **touch button control** panel with pulse function for more precision
- ▶ Maximum speed up to **3700 rpm** (variable speed models)



Bowl with high chimney



- ▶ The lid and scraper can easily removed and disassembled **without tools**
- ▶ All parts in contact with food are **100% dishwasher safe**



- ▶ **Operator safety guaranteed.** A magnetic control system stops the machine immediately if the cover is opened

#### K45 - 4,5 lt capacity

| Speed    | Phases | Power  | RPM                |
|----------|--------|--------|--------------------|
| 1 speed  | 1 ph   | 750 W  | 1500               |
| 2 speeds | 3 ph   | 900 W  | 1500-3000          |
| Variable | 1 ph   | 1000 W | 300 to <b>3700</b> |

**External dimensions (wxdxh): 256x415x470mm**

#### K55 - 5,5 lt capacity

| Speed    | Phases | Power  | RPM                |
|----------|--------|--------|--------------------|
| 2 speeds | 3 ph   | 1000 W | 1500-3000          |
| Variable | 1 ph   | 1300 W | 300 to <b>3700</b> |

**External dimensions (wxdxh): 256x415x470mm**

#### K70 - 7 lt capacity

| Speed    | Phases | Power  | RPM                |
|----------|--------|--------|--------------------|
| 2 speeds | 3 ph   | 1200 W | 1500-3000          |
| Variable | 1 ph   | 1500 W | 300 to <b>3700</b> |

**External dimensions (wxdxh): 256x422x510mm**