

TRS

Vegetable slicers

Increased productivity, outstanding performance, superior quality and extreme sturdiness.



- ▶ **Compact, powerful** and with **inclined base** (20°) makes loading and unloading operations quick and easy
- ▶ Able to slice, shred, grate and dice up to **550 kg/hour**
- ▶ **Long life** and **silent operation** thanks to the durable stainless steel construction and asynchronous motor
- ▶ **Wide range** of more than **40 stainless steel discs** (more than 80 different cuts)
- ▶ **Maximum cleanability** due to the ergonomic design with rounded shapes and stainless steel parts
- ▶ **Large hopper** for higher output and processing of large size and unusual shaped vegetables. No need to pre-cut



- ▶ **Large and long vegetable hoppers** integrated in the same design
- ▶ User friendly waterproof control panel with **pulse function** for **precise slicing**
- ▶ **Ergonomic, easy to lift lever:** minimal pressure is required to process vegetables (for right or left hand use)
- ▶ Automatic start/stop function will stop the machine when the lever hopper is lifted and will restart automatically when lowered, to allow **continuous feeding**



Long vegetable hopper



Touch button control



Large round hopper (215 cm²)

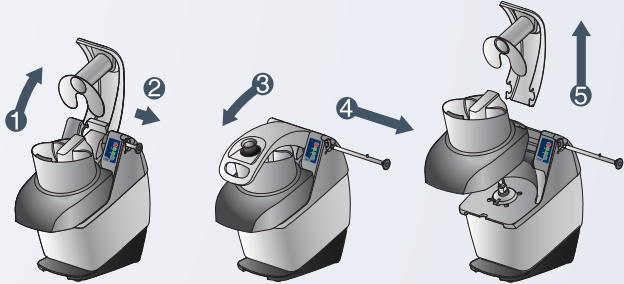
- ▶ Save time and effort: powerful lever remains in upright position so operator can freely use both hands to feed vegetables
- ▶ Variable speed models for more flexibility and precision, speed adjusted to type of cut
- ▶ High discharge zone permits the use of deep GN containers (up to 20 cm)



- ▶ With a few simple movements all parts in contact with food can be removed, without tools, and are **100% dishwasher safe**



- ▶ Safety device protects the operator by stopping the machine in case of misuse



Stainless steel discs with holder included standard

Vegetable slicer TRS

Speed	Phases	Power	RPM
1 speed	1 ph	370 W	340
	1 ph	500 W	340
	3 ph	500 W	340
2 speeds	3 ph	750 W	340-680
Variable	1 ph	750 W	140 to 750

External dimensions (wxdxh): 252x500x502mm