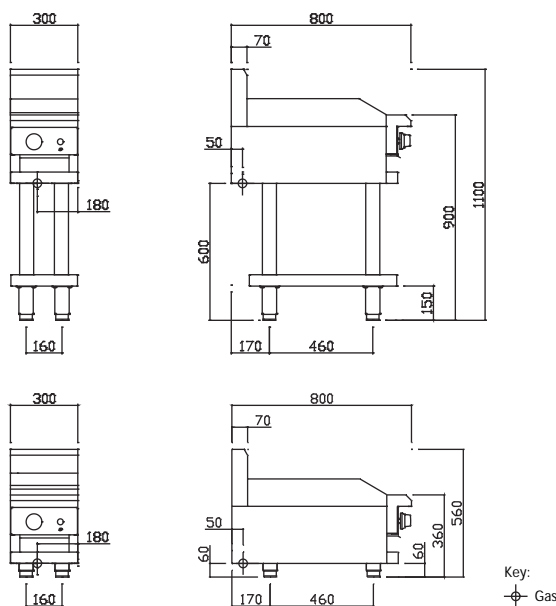


Technical Specifications for CS-3P



PROFESSIONAL

- 21mm thick mild steel griddle plate
- Chrome and ribbed plate finishes optional
- Hotplate and chargrill combinations
- Available freestanding or as a benchtop model
- Modular Professional series design
- 24 month 'Platinum Warranty'
- Easy to clean and service



Griddle/Hotplate

- 18 mj burners with pilot, FFD and piezo ignition
- Variable flame control valve with low flame setting
- 21mm thick mild steel griddle plate
- Top weld sealed hotplate sections
- CS-3P plate: 290mm x 540mm; 0.16m² cooking area
- 2mm 304 stainless steel splash guards
- Griddle oil tray 1.2mm stainless steel

Overall Construction

- Heavy duty construction
- Welded 1.2mm 304 stainless steel front hob
- Front and side panels 0.9mm 304 stainless steel
- Splashback 1.2 mm 304 stainless steel
- Stainless steel legs with 55mm height adjustment range

Dimensions

- 300mm x 800mm x 1100mm H
- 300mm x 800mm x 560mm H (benchtop)
- Working height 900mm
- Weight 53kg
- Packed dimensions 640mm x 860mm x 1260mm H
- Packed weight 73kg

Connections

- Gas 3/4" BSP male
- 180mm from right, 50mm from rear, 600mm from floor
- Benchtop model gas connection: 60mm from bottom
- Supplied with gas regulator (specify Nat or LP on order)

Cleaning & Servicing

- Easy access to all parts & components from front

Options/Accessories

- Rear castors
- Joining caps
- Ribbed or chrome finish on hotplates
- RH and LH side shields
- Benchtop mount (specify when ordering)

	<u>Model</u>	<u>Description</u>	<u>Nat Gas</u>	<u>LP Gas</u>
	CS-3P	300 grill	18 mj	18 mj

2*

YEAR

PLATINUM

WARRANTY



*1 YEAR INCLUDED; 1 YEAR EXTENDED UPON PRODUCT REGISTRATION