

## Gas Fry Tops

The Elco 700HP range is comprised of over 100 models designed to guarantee the highest level of performance, reliability, energy saving, safety standards and ergonomic operation. These concepts are reflected in the total modularity of the range that ensures numerous configurations, either free-standing or bridged. Elco 700HP demonstrates how advanced technology can satisfy the needs of the professional caterer. The models detailed on this sheet are Gas Fry Tops.



178646

### EASY TO INSTALL

- All top models are provided with a service duct to facilitate installation and can be mounted on open base cupboards or bridging supports.
- Main connections can be accessed via the rear or base of the unit.

### EASY TO CLEAN

- One piece pressed worktop in 1,5mm 304 AISI stainless steel with smooth, rounded corners.
- Front panel in 304 AISI stainless steel with Scotch Brite finish.
- All models have right-angled, laser cut side edges to allow flush-fitting joins between units eliminating gaps and possible dirt traps.

### EASY TO USE

- Cooking surface in mild steel or chromed: available smooth or ribbed for optimum grilling results.
- The standard Fry Top cooking plate is in 15mm thick special mild steel for even temperature distribution. Ideal for grilling, browning and the radiant heat allows thicker cuts of meat to be cooked perfectly.
- The chromium surface means no absorption of cooking juices into the plate resulting in higher output of product and more flexibility. Very little energy is lost to the kitchen environment due to the reflective qualities of the chromium surface, making the work area more comfortable.
- Splashback in 304 AISI included as standard.

- Cooking surface with large drain hole, for fat drainage into a 3 liter collector placed under the cooking area.
- All gas appliances are supplied for use with natural gas or LPG. Conversion jets supplied as standard.
- Safety thermostat on models with thermostatic control (temperature markings in °C). Piezo ignition.
- Very fast heat-up time to maximum temperature.

### EASY TO MAINTAIN

- IPX4 water protection.

### EASY ON THE ENVIRONMENT

- 98% recyclable by weight.
- CFC free packaging.



**Electrolux**

**Elco 700HP  
Gas Fry Tops**

	<b>QRG400 178645</b>	<b>QRG401 178646</b>	<b>QRG400C 178647</b>	<b>QRG800 178648</b>	<b>QRG813 178649</b>	<b>QRG800C 178650</b>	<b>QRG813C 178657</b>
<b>TECHNICAL DATA</b>							
Power supply	Gas	Gas	Gas	Gas	Gas	Gas	Gas
Type of gas burner control	Cock	Cock	Thermostatic valve	Cock	Cock	Thermostatic valve	Thermostatic valve
External dimensions - mm							
width	400	400	400	800	800	800	800
depth	730	730	730	730	730	730	730
height	250	250	250	250	250	250	250
Cooking surface							
material	Mild Steel	Mild Steel	Chromium Plated	Mild Steel	Mild Steel	Chromium Plated	Chromium Plated
Cooking surface dimensions - mm							
width	330	330	330	730	730	730	730
depth	540	540	540	540	540	540	540
Working temperature - min/max - °C	200, 400	200, 400	130, 300	200, 400	200, 400	130, 300	130, 300
Power - kW							
gas	7	7	7	14	14	14	14
Net weight - kg.	40	40	40	70	70	70	70
Cooking surface							
smooth	●		●	●		●	
ribbed		●					
smooth and ribbed					●		●
<b>INCLUDED ACCESSORIES</b>							
SCRAPER FOR RIBBED PLATE FRY TOP							1
SCRAPER FOR SMOOTH PLATE FRY TOP			1			1	1
<b>ACCESSORIES</b>							
2 SIDE COVERING PANELS FOR TOP-D=700MM	216277	216277	216277	216277	216277	216277	216277
CHIMNEY COVER 400MM OPEN	206284	206284	206284				
CHIMNEY COVER 800MM OPEN-LARGE CHIMNEY				206273	206273	206273	206273
FRONTAL HANDRAIL 1200 MM	216049	216049	216049	216049	216049	216049	216049
FRONTAL HANDRAIL 1600 MM	216050	216050	216050	216050	216050	216050	216050
FRONTAL HANDRAIL 400 MM	216046	216046	216046	216046	216046	216046	216046
FRONTAL HANDRAIL 800 MM	216047	216047	216047	216047	216047	216047	216047
LARGE HANDRAIL(PORTIONING SHELF)400 MM	216185	216185	216185	216185	216185	216185	216185
LARGE HANDRAIL(PORTIONING SHELF)800 MM	216186	216186	216186	216186	216186	216186	216186
PRESSURE REGULATOR FOR GAS UNITS	927225	927225	927225	927225	927225	927225	927225
RIGHT AND LEFT SIDE HANDRAILS	206240	206240	206240	206240	206240	206240	206240
SCRAPER FOR RIBBED PLATE FRY TOP		164257			164257		
SCRAPER FOR SMOOTH PLATE FRY TOP	164255			164255	164255		
SUPPORT FOR "BRIDGE" SYSTEM 1000 MM	206138	206138	206138	206138	206138	206138	206138
SUPPORT FOR "BRIDGE" SYSTEM 1200 MM	206139	206139	206139	206139	206139	206139	206139
SUPPORT FOR "BRIDGE" SYSTEM 1400 MM	206140	206140	206140	206140	206140	206140	206140
SUPPORT FOR "BRIDGE" SYSTEM 1600 MM	206141	206141	206141	206141	206141	206141	206141
SUPPORT FOR "BRIDGE" SYSTEM 400 MM	206154	206154	206154	206154	206154	206154	206154
SUPPORT FOR "BRIDGE" SYSTEM 800 MM	206137	206137	206137	206137	206137	206137	206137

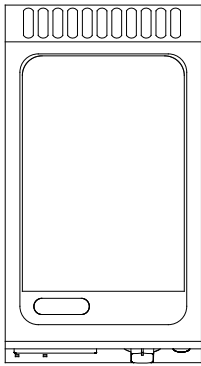
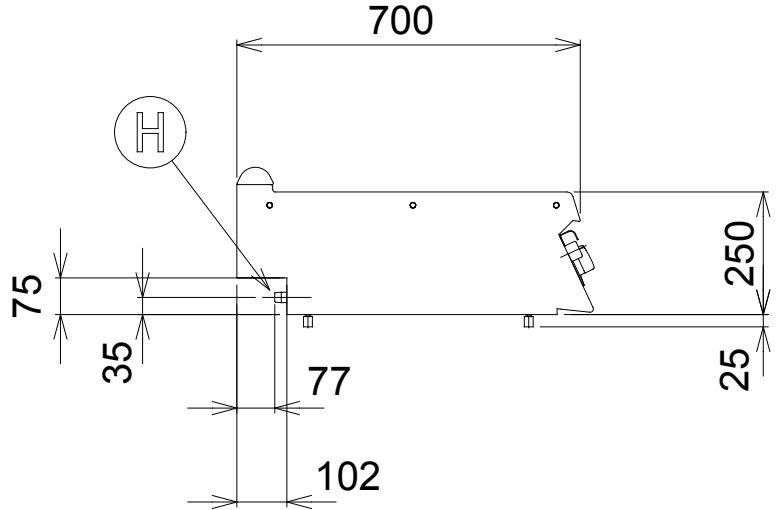
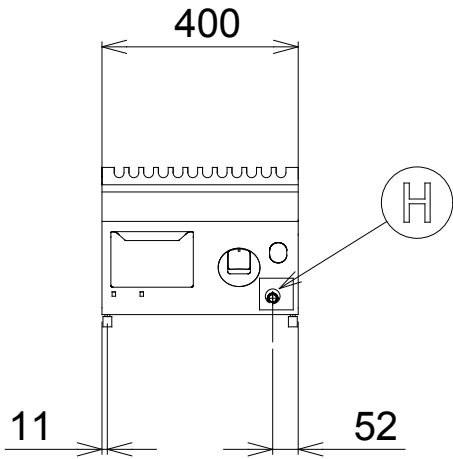
CGHA010

2007-07-30

Subject to change without notice

Elco 700HP  
Gas Fry Tops

178645, 178647, 178646



59782600

LEGEND	QRG400 178645	QRG401 178646	QRG400C 178647
	H - Gas connection	1/2"	1/2"

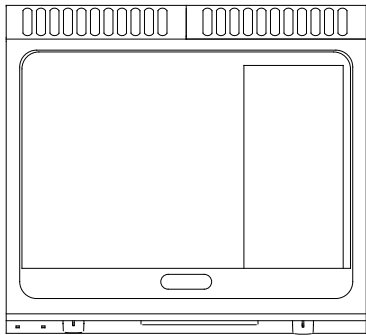
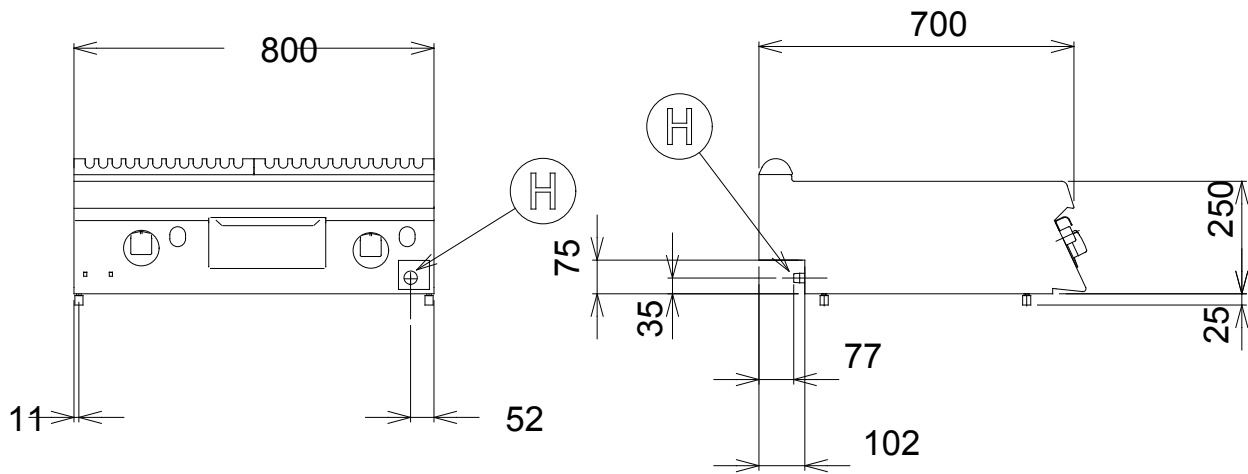
CGHA010

2007-07-30

Subject to change without notice

Elco 700HP  
Gas Fry Tops

178648, 178657, 178650, 178649



597826100

LEGEND	QRG800 178648	QRG813 178649	QRG800C 178650	QRG813C 178657
H - Gas connection	1/2"	1/2"	1/2"	1/2"

CGHA010

2007-07-30

Subject to change without notice