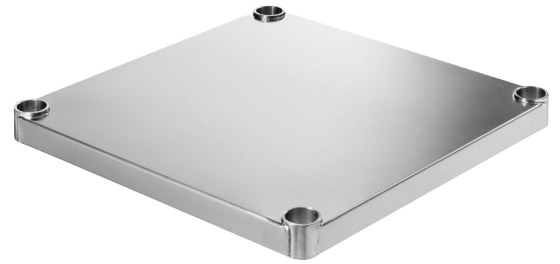
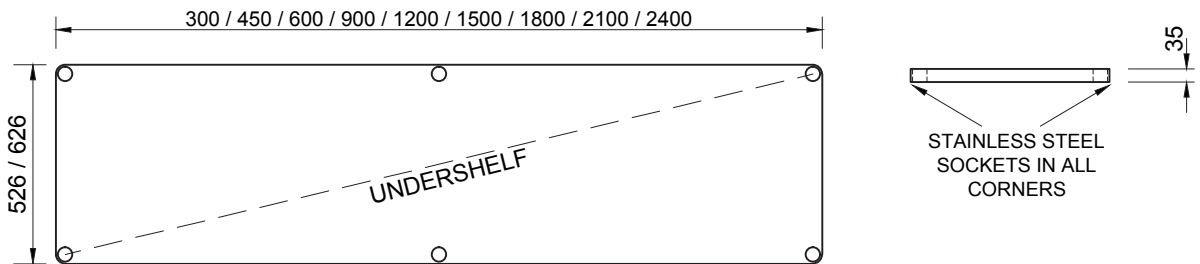


## Product Information:

- 1.2mm thick stainless steel under-shelf
- With stainless steel top hat stiffening
- Are available to suit a 600 or 700 series
- For use on products 01, 02, 03 and 04
- **NOTE: 1800, 2100 & 2400mm wide to fit under 6 legs**



## General Drawing:



## Specifications:

<b>SS21.0300</b>	300mm x 526mm x 35mm
<b>SS21.0450</b>	450mm x 526mm x 35mm
<b>SS21.0600</b>	600mm x 526mm x 35mm
<b>SS21.0900</b>	900mm x 526mm x 35mm
<b>SS21.1200</b>	1200mm x 526mm x 35mm
<b>SS21.1500</b>	1500mm x 526mm x 35mm
<b>SS21.1800</b>	1800mm x 526mm x 35mm
<b>SS21.2100</b>	2100mm x 526mm x 35mm
<b>SS21.2400</b>	2400mm x 526mm x 35mm

<b>SS21.7.0300</b>	300mm x 626mm x 35mm
<b>SS21.7.0450</b>	450mm x 626mm x 35mm
<b>SS21.7.0600</b>	600mm x 626mm x 35mm
<b>SS21.7.0900</b>	900mm x 626mm x 35mm
<b>SS21.7.1200</b>	1200mm x 626mm x 35mm
<b>SS21.7.1500</b>	1500mm x 626mm x 35mm
<b>SS21.7.1800</b>	1800mm x 626mm x 35mm
<b>SS21.7.2100</b>	2100mm x 626mm x 35mm
<b>SS21.7.2400</b>	2400mm x 626mm x 35mm

Due to continuous product research and development, the information contained herein is subject to change without notice.

Revision: A - 12/03/2021

[www.stoddart.com.au](http://www.stoddart.com.au)

[www.stoddart.co.nz](http://www.stoddart.co.nz)