

Single Pan Gas Fryer 600mm

FNLB8130G-HPO



- 140 MJ/hr continuous production single pan fryer
- High Power Output infra-red burner system
- Easy clean stainless steel open pan with 10 year limited warranty
- 31L oil capacity
- 2 large or 3 standard basket capacity
- Large capacity cool zone
- 32mm (1¼") drain valve
- Stainless steel exterior
- Black vitreous enamel finish to front panels
- Easy service
- Fully modular

OVERALL CONSTRUCTION

- Stainless steel pan with 10 year limited warranty
- Bull nose welded 1.5mm 304 stainless steel
- Splashback 1.5mm 304 stainless steel
- Side panels 1.2mm 304 stainless steel
- Double skin door with 0.9mm 304 stainless exterior
- 32mm (1¼") drain valve
- 150mm legs in 63mm dia. heavy-duty 1.2mm 304 stainless steel with adjustable feet
- 2 large standard baskets and stainless steel lid supplied standard

CONTROLS - Burner System

- Electronic thermostat
- Large easy use control with easy view scale
- Thermostat range 90 – 195°C
- Over-temperature safety cut-out
- Full electronic ignition system
- Two 70MJ/hr power infra-red burners
- Independent LH and RH burner systems
- Lock-out alarm indicators on front panel

CLEANING AND SERVICING

- Open stainless steel pan for easy clean
- Easy clean basket support bar
- 32mm (1½") drain valve for effective draining
- Easy clean stainless steel exterior
- Access to all parts from front of unit

Series Options

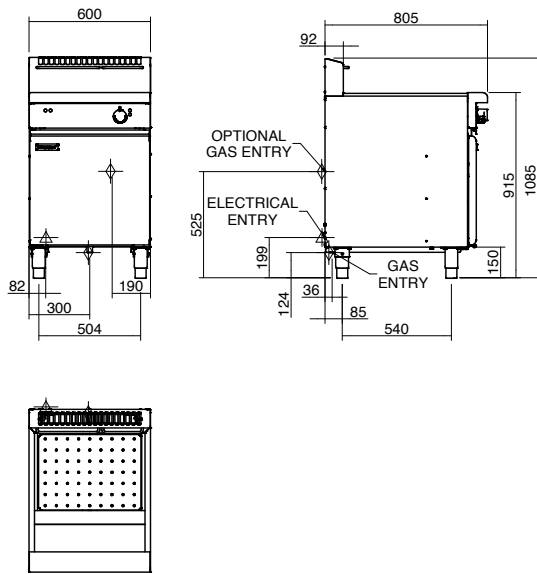
FNLB - Low back models

FNB - 215mm splashback option

Waldorf Bold

Single Pan Gas Fryer 600mm

FNLB8130G-HPO



SPECIFICATIONS

Production rate
50kg/hr
Pan Size
Oil capacity 31L (46.5lbs shortening)
Width 515mm
Length 380mm
Oil frying depth 95mm
Baskets
2 chrome plated large wire baskets
210mm W x 335mm D x 145mm H
Optional 3 chrome plated standard wire baskets
145mm W x 335mm D x 145mm H
Stainless steel perforated basket support plate
Burners
2 x 70MJ/hr infra-red burners
Gas power
140MJ/hr, 39kW
Gas connection
R 3/4 (BSP) male
300mm from RH side, 35mm from rear,
and 125mm from floor
Optional rear connection
(refer specification drawing)
All units incorporate Natural and LP gas
regulator
Electrical Connection
230-240 Vac, 1P+N+E, 50Hz, 0.5A
3 pin 10A cordset fitted

Dimensions
Width 600mm
Depth 805mm
Height 915mm
Incl. low back 1085mm
Incl. splashback option 1130mm

Nett weight
100kg nett
Packing data
0.70m³, 148kg
Width 870mm
Depth 645mm
Height 1255mm
Gas types
Available in Natural gas and LP gas
Please specify when ordering
Units supplied complete with gas type
conversion kits

OPTIONS AT EXTRA COST
Options at extra cost
Waldorf Filta-max filtration system
Fish plates
Extra large baskets
Standard baskets
Side splash guards
Joining caps
Castors
Plinth mounting

MOFFAT

moffat.com.au
moffat.co.nz

Australia
moffat.com.au

Moffat Pty Limited

Victoria/Tasmania
740 Springvale Road
Mulgrave, Victoria 3170
Telephone +613-9518 3888
Facsimile +613-9518 3833
vsales@moffat.com.au

New South Wales
Telephone +612-8833 4111
nswsales@moffat.com.au

South Australia
Telephone +613-9518 3888
vsales@moffat.com.au

Queensland
Telephone +617-3630 8600
qldsals@moffat.com.au

Western Australia
Telephone +618-9413 2400
wasales@moffat.com.au

New Zealand
moffat.co.nz

Moffat Limited

Rolleston
45 Illinois Drive
Izone Business Hub
Rolleston 7675
Telephone +64 3-983 6600
Facsimile +64 3-983 6660
sales@moffat.co.nz
Auckland
Telephone +64 9-574 3150
sales@moffat.co.nz



Designed and manufactured by



ISO9001
All Waldorf Bold products are designed and manufactured by Moffat using the internationally recognised ISO9001 quality management system, covering design, manufacture and final inspection, ensuring consistent high quality at all times.

In line with policy to continually develop and improve its products, Moffat Limited reserves the right to change specifications and design without notice.

© Copyright Moffat Ltd
AN.WBD.S.02.19

an Ali Group Company



The Spirit of Excellence