



**ANSIR  
SYSTEMS**

# Crescent Pallet Carousel Tech Specs



[ansir.com.au](http://ansir.com.au)



+61 (03) 9768 3303



[sales@ansir.com.au](mailto:sales@ansir.com.au)



6 Latchford Rd  
Cranbourne West VIC 3977  
Australia



## Function

The carousel is designed to recirculate baggage on a continuous basis until it is removed from the conveyor. The crescent pallet carousel can be used as an arrivals carousel or make-up loop. Whilst the design of the conveyor modules has been standardised, it allows for many different configurations length and pallet height to suit different applications.

## Features

- Caterpillar drive to ensure positive engagement at all times.
- Direct shaft mounted gearmotor provides drive to the sprockets.
- Low minimum conveyor height of 310mm.
- Sealed for life bearings used throughout in order to minimise maintenance.
- Modular components provide flexibility in design and future expansion.

### Arrivals Reclaim Carousel

- Typically, 320 mm in height to allow for easy removal of baggage. Stainless steel clad in passenger area.

### Departures Make-up Carousel

- Located airside. Typically 600 mm to 800 mm in height to allow for easy unloading of baggage into / onto a container / trailer. Galvabond or powder coated finish.

# Technical Specifications

## Drive Unit

Caterpillar drive unit floor mounted and consists of a gearmotor sized to suit the required drive. The gearmotor is shaft mounted directly to the drive head shaft. Drive components are adequately sized to suit the live load and speed of the conveyor and are rated for long life, 24 hour per day operation.

## FRAME

### Cross Brace

Fabricated from 3 mm mild steel, zinc plated finish. 100 mm wide x 40 mm deep with an overall width of 1186 mm. Welded 5 mm end plates allow for fixing of the trims.

### Centre Guide Track

- Straight – Mild steel angle, 30 × 30 × 3 mm.
- Curve – Mild steel rectangular bar 25 × 12 mm.
- Fabricated to create a 52 mm wide running lane for the 50 mm guide wheel to run. Zinc plated finish.

### Wheel Track

Folded 3 mm mild steel to form an "L" shape profile 50mm x 55mm. Holes punched at 100 mm spacing along its length on which a 50 mm load wheel is mounted.

### Guide / Load Wheel

#6200ZZ sealed bearing with moulded nylon 6 tyre 50 mm dia x 13 mm wide.

### Supports

Fabricated mild steel construction with M16 threaded rod for vertical adjustment and precise levelling. A sound, reasonably level floor is required for simple installation and fixing.

## CLADDING

### Frame Rail / Rear Upstand

2.5 mm thick 304 grade stainless steel with #4 finish horizontal grain on surfaces exposed to public view. 3 mm powder coated or galvabond mild steel airside.

### Toe Kick Plate

2 mm powder coated mild steel, set back approximately 100 mm from the front trim to create a working toe space.

## CONVEYOR TREAD

### Crescent Pallet

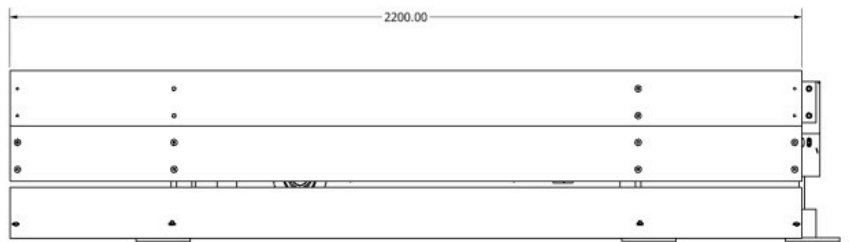
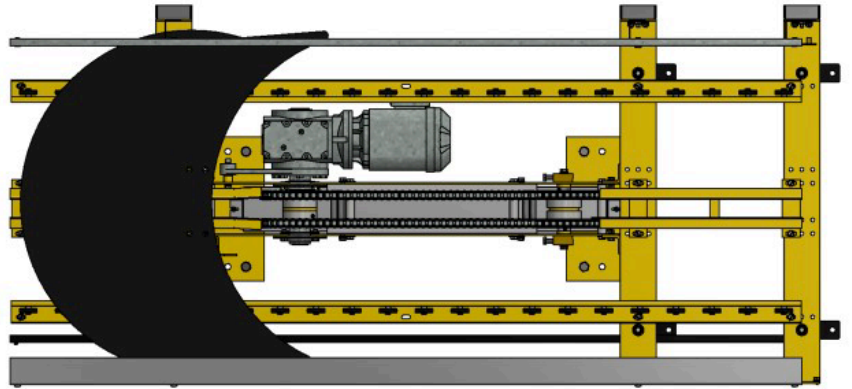
Crescent shaped polyurethane covered, steel or wooden composite core accurately moulded to maintain correct relationship between segments when negotiating turns.

### Link Arms

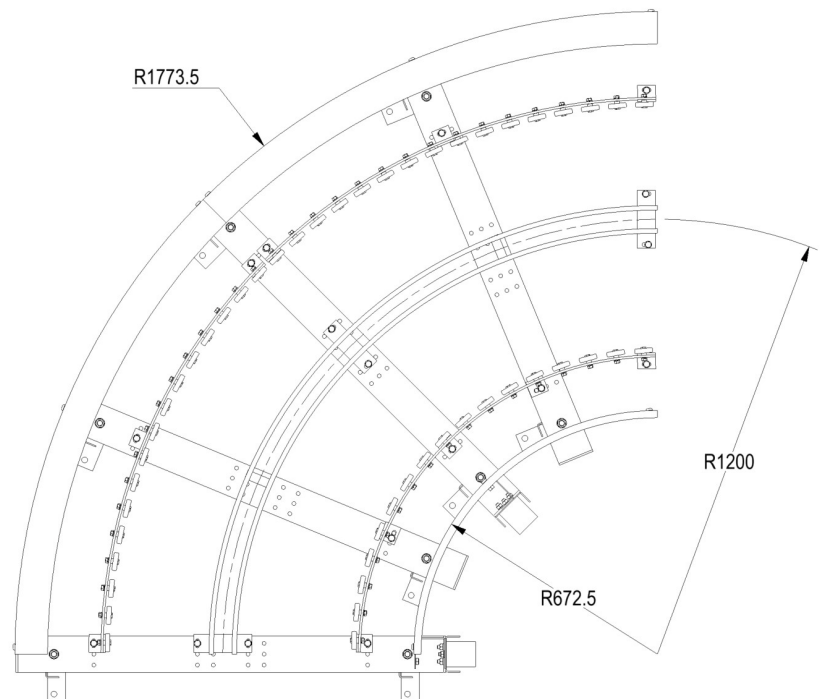
Fabricated mild steel construction. 6 mm thick main plate with 4 x M8 tapped holes to attach the crescent pallet. 40 mm wide x 10 mm thick main arm and GE12FW spherical bearing. 609.6mm Pitch.

# General Dimensions

## Drive Unit Module

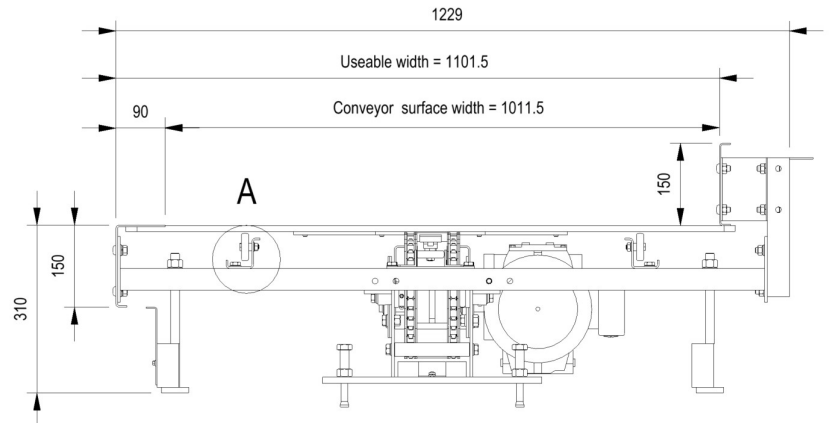


## Curve Module



# General Dimensions

## Cross Section



## Standard Configuration

